

FSC, CE, ISO9001, 1S014001,
CARB, SONCAP CERTIFIED

www.fushiwoodgroup.com

CHINA TOP 5 PLYWOOD & LVL & MDF MANUFACTURER



CHINA TOP 5 PLYWOOD & LVL & MDF MANUFACTURER

CONTENTS

- ① BRIEF INTRODUCTION
- ② BREAK BULK
- ③ COMMERCIAL PLYWOOD
- ④ FILM FACED PLYWOOD
- ⑤ MDF / HDF
- ⑥ DOOR SKIN
- ⑦ LVL SCAFFOLD PLANK
- ⑧ LVL H20 I-BEAM
- ⑨ WPC
- ⑩ HARDBOARD
- ⑪ PB
- ⑫ CERTIFICATES
- ⑬ CONTACT US

BRIEF INTRODUCTION	BREAK BULK	COMMERCIAL PLYWOOD	FILM FACED PLYWOOD	MDF / HDF	DOOR SKIN	LVL SCAFFOLD PLANK	LVL H20 I-BEAM	WPC	HARDBOARD / PB	CERTIFICATES/ CONTACT US
-----------------------	---------------	-----------------------	-----------------------	-----------	-----------	-----------------------	-------------------	-----	-------------------	-----------------------------



- **SINCE 1987**
- **10 FACTORIES 23 00 EMPLOYEES**
- **YEARLY OUTPUT 300, 000 CBM**
- **OSHA AS1577 AS2269 EN13377 STANDARDS**
- **ISO9000, ISO14001, CARB, CE**

SONCAP CERTIFIED



BRIEF INTRODUCTION	BREAK BULK	COMMERCIAL PLYWOOD	FILM FACED PLYWOOD	MDF / HDF	DOOR SKIN	LVL SCAFFOLD PLANK	LVL H20 I-BEAM	WPC	HARDBOARD / PB	CERTIFICATES/ CONTACT US
-----------------------	---------------	-----------------------	-----------------------	-----------	-----------	-----------------------	-------------------	-----	-------------------	-----------------------------



COMMERCIAL PLYWOOD

Description

- Size: 1220*2440, 1250*2500MM
- Thickness: 2.5-30MM
- Core: Poplar, Pine, Birch, Hardwood, Combi
- Face and Back: Okoume, Bintangor, Poplar, Pine, Hardwood, Birch, Ash, Oak, Technical Veneer
- Glue: E2/E1/E0/MR/Melamine/WBP
- Grade: BB/BB, BB/CC, CC/DD, or Utility grade
- MC: 6-14% • Glue: E1, E2, E0, Melamine, WBP
- Density: 530-730 KGS/CBM
- Formaldehyde: E0≤0.5mg/L, E1≤1.5mg/L, E2≤5mg/L
- Certificate: CARB/CE/ISO9001



Hot Press Machine



Veneer Drying Machine



During Production



Packing Details



COMMERCIAL PLYWOOD PROJECTS



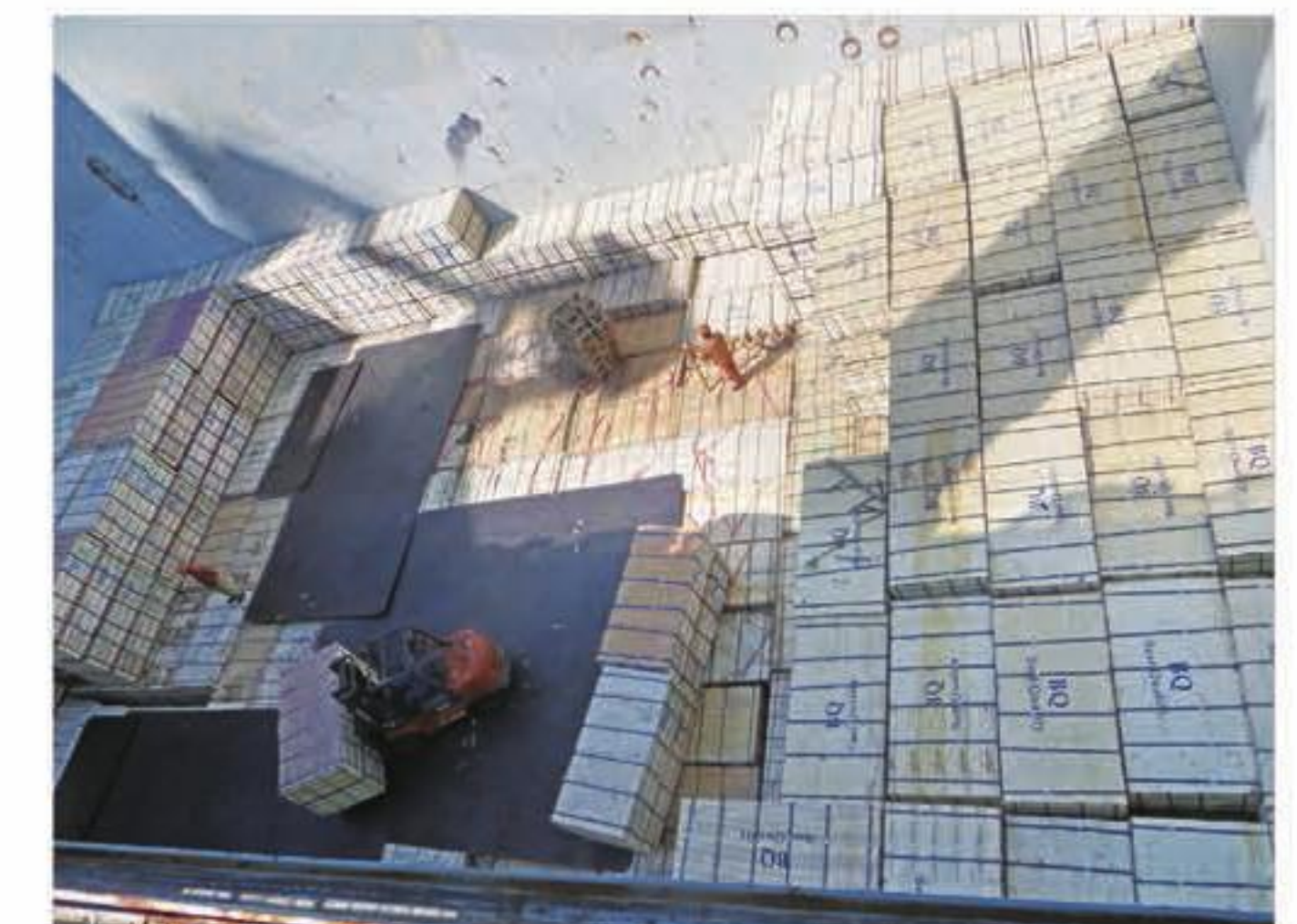
In Fushi Warehouse



Cargo Loading



Cargo Ready to be shipped



Cargo Loaded On Vessel



Celebration Party With African partners



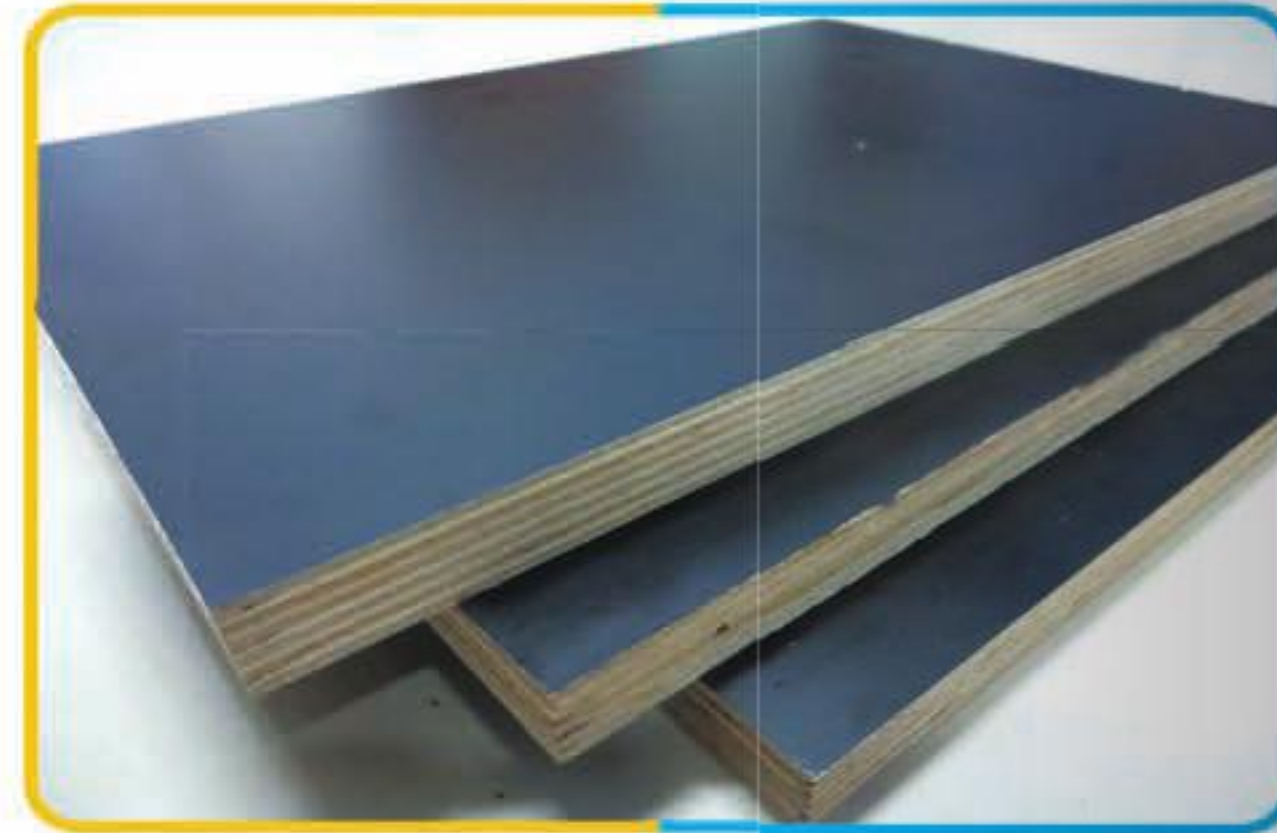
With VIP Client



FILM FACED PLYWOOD

Description

- Size: 1220*2440mm, 1250*2500mm or as request.
- Thickness: 9-25mm
- Core: Hardwood, Poplar, Combi, Birch etc
- Film: Black, Brown
- Glue: MR/WBP/MELAMINE
- Usage: Construction
- Density: 530-730KGS/CBM
- Cycle Life: 10-30 times
- MC: below 14%
- Grade: One time / two times hot press.



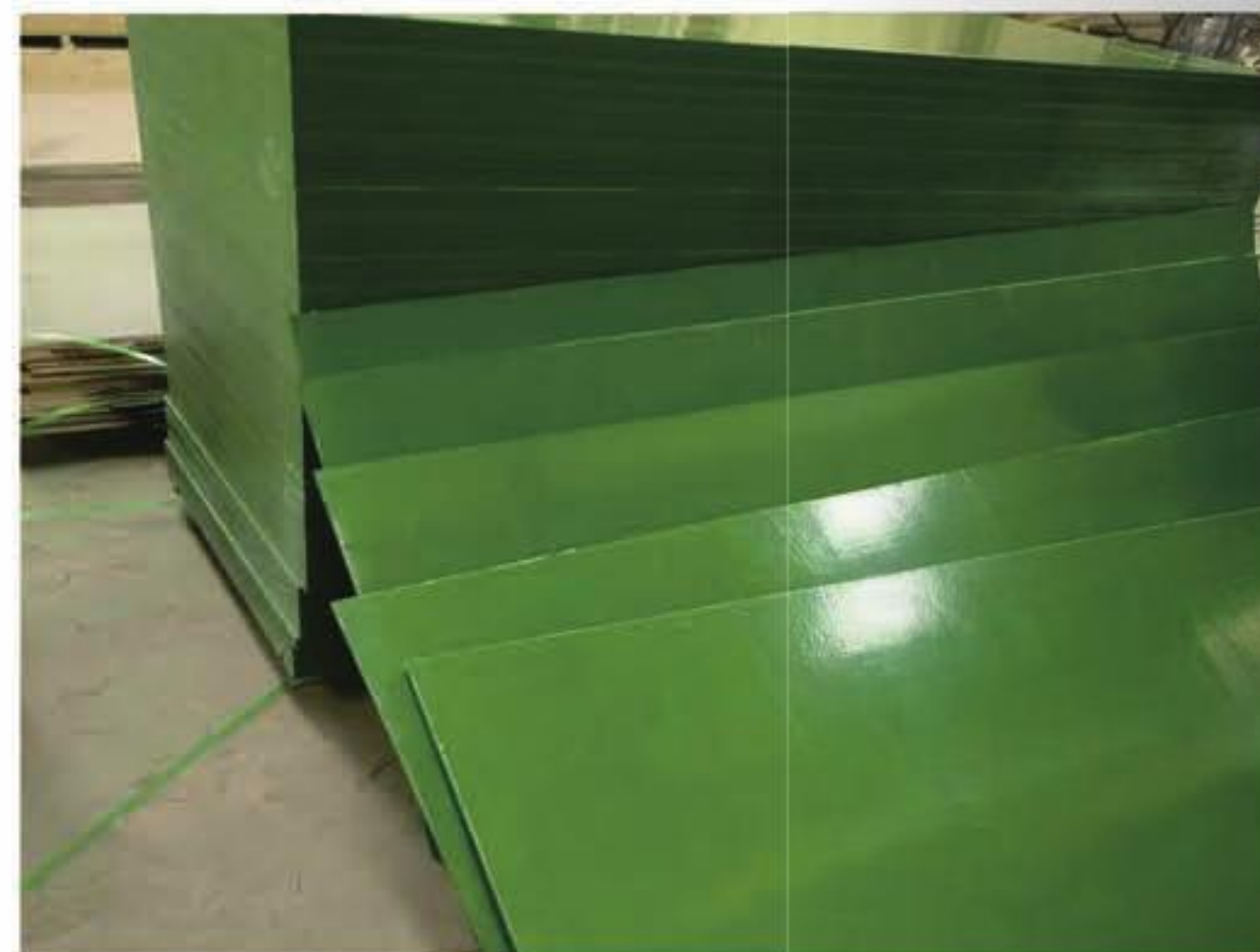
Registered Brand BQ



Brand BQ



Film Faced Plywood PLant



Plastic Film Faced Plywood



FILM FACED PLYWOOD PROJECTS



South Asia Subway Project



KSA Project



KSA Residential Project



UAE Project



MDF / HDF

Description

- Size: 1220*2440*2.5-30mm, 1830*2440*2.5-25mm , 1830*3660*16mm or custerimized.
- Glue: E1/E2/E0
- Density: 730~900kgs/m3
- Raw Material: Poplar, Hardwood, Pine Etc.
- MC: 4-9%
- Internal Bonding(Mpa): >0.55
- Modulus of elasticity:>3700Mpa
- Water absorption rate:≤10%
- Usage: For furniture(door, bed etc), Flooring manufacturing, Decoration, Packing.
- Formaldehyde emission standard: E1/E2/E0
- Melamine paper color: White, Black, Yellow, Red, Beech, Cherry, Maple, Pine, Teak.Etc.



FANCY MDF/ HDF



OAK,ASH,TEAK,BEECH,OKUME,WALNUT,CHERRY VENEER MDF



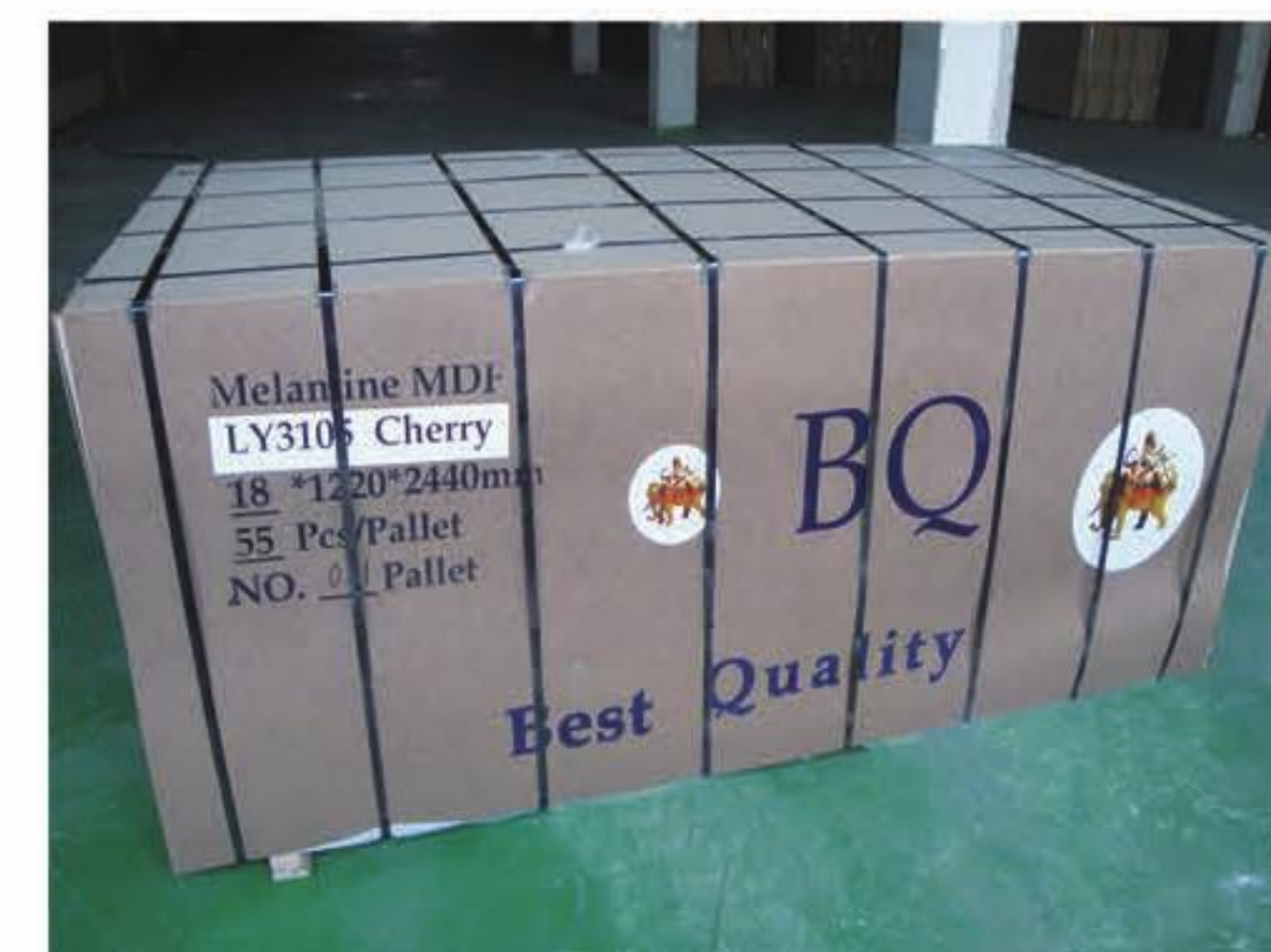
Fancy MDF PLant



Quality Check



Veneer Workshop



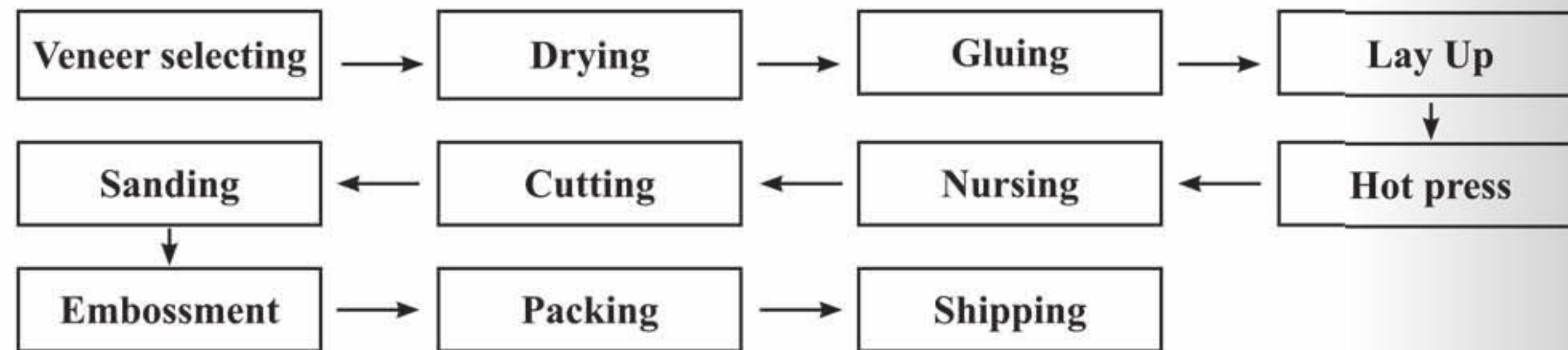
Packing Details

Description

- Raw material: New Zealand radiate pine
- Size: T 38/42 * W 225/230 * L 3900-12000MM
- Glue: 100%WBP glue 72 hours hot water boiling or Melamine Glue 8 hours hot water boiling
- Density: 560~610KGS/CBM • MC: 8-12%
- Certificate: CE Standard/SGS
- Standard: OSHA Middle Duty / Heavy Duty AS1577
- End Painting, edge chamfered, embossed



Process



8000MM LVL Hot Press Line



Chamfer & Embossment Line



Cargo in Stock



Cargo In Client's Warehouse

SGS TEST REPORT

No. : SHCCM130100256
Date : Feb. 04, 2020
Page: 2 of 4

Product specification: 3900mm x 230mm x 42mm (Length x Width x Thickness)

Test results:


Test item	Span(mm)	Test result	Requirement of OSHA	Conclusion
Deflection at 75psf (heavy-duty)	1800	6.96 mm	≤30.00 mm ^{Note 1}	Pass
Deflection at three person-750pounds total	1800	19.90 mm	≤30.00 mm ^{Note 1}	Pass
Supporting at 4x75psf (heavy-duty)	1800	Unbroken	No failure at least 300psf ^{Note 2}	Pass

Note 1: OSHA Regulations (Standard-29 CFR)-1926.451(f) (16):
Platforms shall not deflect more than 1 / 60 of the span when loaded.

Note 2: OSHA Regulations (Standard-29 CFR)-1926.451(a) (1):
Each Scaffold and scaffold component shall be capable of supporting, without failure, its own weight and at least 4 times the maximum intended load applied or transmitted to it.

Statement: Unless otherwise stated the results shown in this test report refer only to the sample(s) tested.

Test Photos:



Sample photo
***** To be continued*****

The document is issued by the Company subject to its General Conditions of Service printed on request, available on request at www.sgsgroup.com and conditions of use are also printed on request. The document is issued by the Company subject to its General Conditions of Service printed on request, available on request at www.sgsgroup.com and conditions of use are also printed on request. The document is issued by the Company subject to its General Conditions of Service printed on request, available on request at www.sgsgroup.com and conditions of use are also printed on request.

Member of the SGS Group (SGS SA)

SGS TEST REPORT

No. : SC121221753
Date : Jan. 04, 2020
Page: 2 of 4

Product specification: 3900mm x 225mm x 38mm (Length x Width x Thickness)

Test results:

Test item	Span(mm)	Test result(mm)	Requirement of OSHA (See Note 1), (mm)	Conclusion
Deflection at 50psf (medium-duty)	1800	7.44	≤30.00	Pass
Deflection at two person-500pounds total	1800	19.58	≤30.00	Pass

Note 1: OSHA Regulations (Standard-29 CFR)-1926.451(f) (16):
Platforms shall not deflect more than 1 / 60 of the span when loaded.

Test item	Span(mm)	Test result(mm)	Requirement of OSHA (See Note 2)	Conclusion
Supporting at 4x50psf (medium-duty)	1800	Unbroken	No failure at least 200psf	Pass
Supporting at 4xtwo person-4x500pounds total	1800	Unbroken	No failure at least 2000lbs	Pass

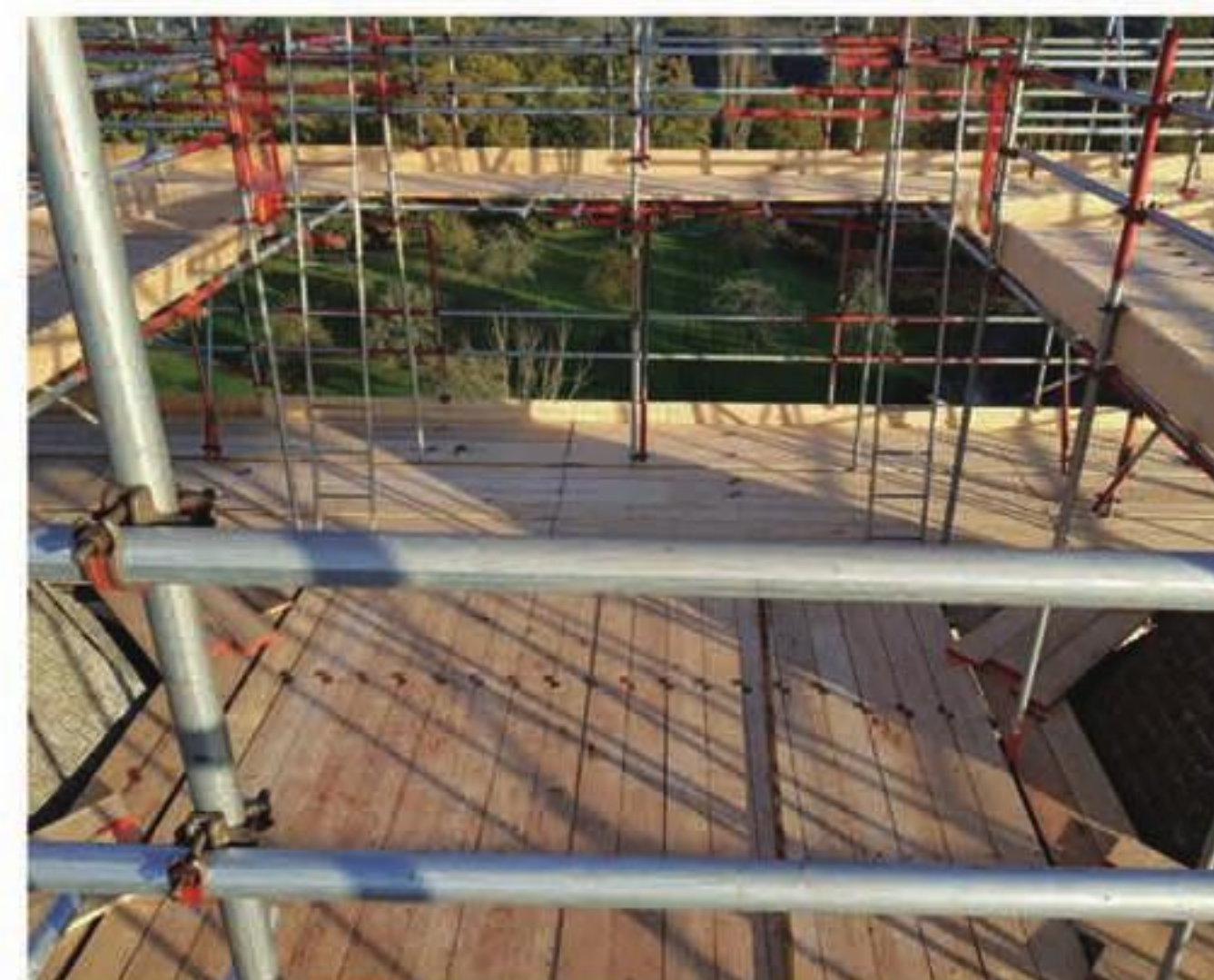
Note 2: OSHA Regulations (Standard-29 CFR)-1926.451(a) (1):
Each Scaffold and scaffold component shall be capable of supporting, without failure, its own weight and at least 4 times the maximum intended load applied or transmitted to it.

Statement: Unless otherwise stated the results shown in this test report refer only to the sample(s) tested.
***** To be continued*****

The document is issued by the Company subject to its General Conditions of Service printed on request, available on request at www.sgsgroup.com and conditions of use are also printed on request. The document is issued by the Company subject to its General Conditions of Service printed on request, available on request at www.sgsgroup.com and conditions of use are also printed on request. The document is issued by the Company subject to its General Conditions of Service printed on request, available on request at www.sgsgroup.com and conditions of use are also printed on request.

Member of the SGS Group (SGS SA)

Our Fine Quality Products Surpass OSHA MD/HD Duty tested by SGS



UAE LVL PROJECT



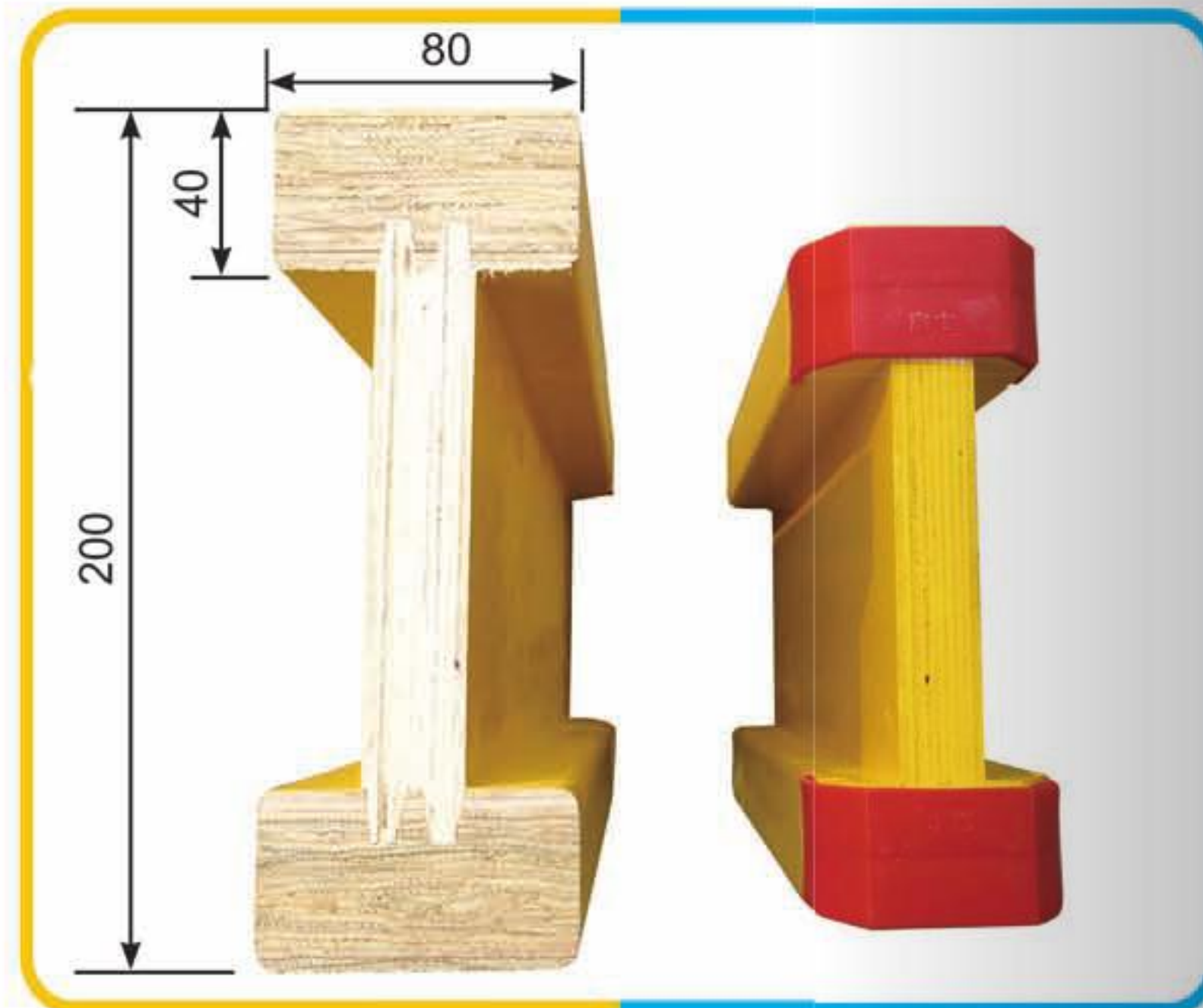
SAUDI ARAMCO PROJECT



LVL H20 I--BEAM

Description

- Raw Material: Pine LVL For Flange, Poplar Plywood For Web.
- Glue:100%WBP Phenolic Glue
- Density: 5.0-6.0kg/M
- Size:Flange:40MM*80MM*Length
Web:27MM*150MM*Length
Height:200MM
- Water Content: 5-12%
- Length:1-12M(Asia Record)
- Painting: Yellow Waterproof Painting
Or As Per Request
- Usage: Formwork



Each Product Surpass International Standard EN 13377

SGS

TEST REPORT

No. : SC121221751
Date : Dec. 20, 2019
Page: 2 of 4

Test conducted: EN 13377: 2002 Prefabricated timber formwork beams – Requirements, classification and assessment

I. Sample Detail

Test Item	Sample Dimension		
	L	b	H
Shear Resistance (V)	1500mm	80mm	200mm
Bending Resistance (M)	3300mm	80mm	200mm
Bearing Resistance (R _b)	3000mm	80mm	200mm

II. Test Result

Test Item	Test Result	Failure Location
Shear Resistance (V)	27.71 kN	Middle part
Bending Resistance (M)	15.75 kNm	Finger joint
Bearing Resistance (R _b)	71.07 kN	Finger joint
Bending Stiffness (E _i)	460 kNm ²	
Remark	Classification cannot be given based on single test result of each test item.	

***** To be continued*****



LVL H20 I--BEAM





WPC

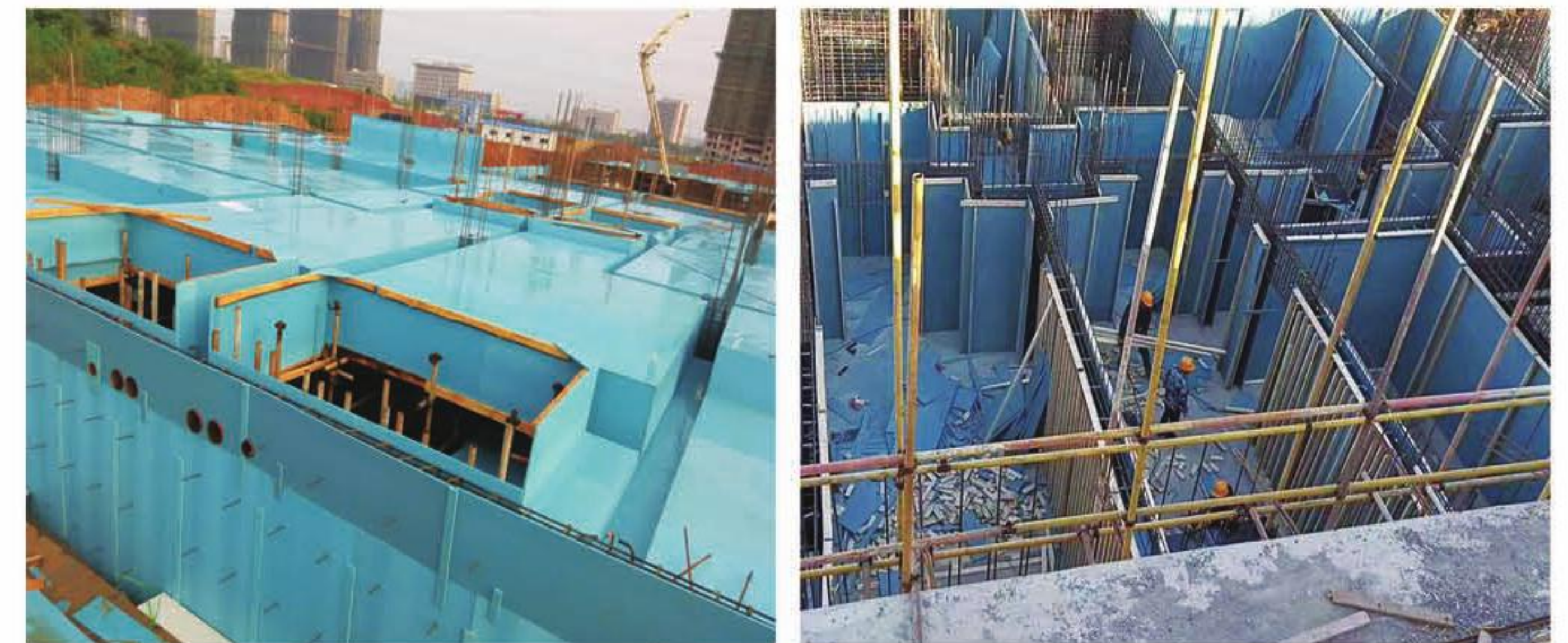
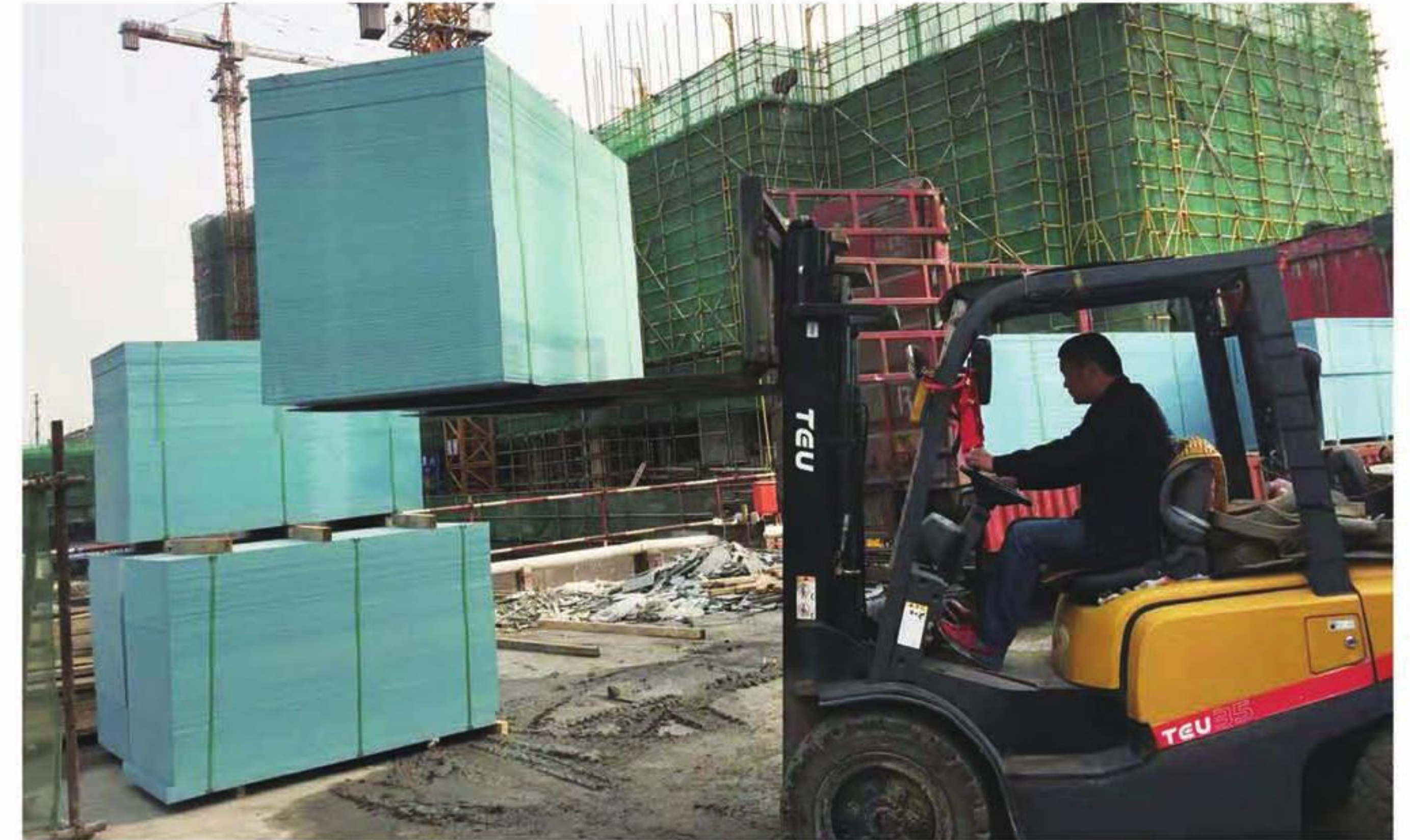


WPC FORMWORK BOARD

- ✓ Color: grey, green, wood or customized
- ✓ Size: 915 x1830mm, 1000 x2000mm, 1220 x2440mm, 1220x5800mm or customized
- ✓ Thickness: 9-18mm
- ✓ Water Absorption: 0.2%
- ✓ Apparent Density: 600-950 kg/cbm
- ✓ Shore Hardness: ≥ 70 HD
- ✓ Bending Strength: ≥ 28.7 Mpa
- ✓ Nail-holding Ability: ≥ 2000 N
- ✓ Features: waterproof, fire prevention, corrosion resistance
- ✓ Application: concrete pouring, support platform



WPC





HARDBOARD



PB

HARDBOARD

Size	1220*2440*2.5-6MM
Density	950-1000kgs/m ³



OSB

Size	1220*2440*9-25MM 1250*2500*9-25MM
Glue	Melamine WBP
Density	700kgs/m ³



PARTICLE BOARD

Size	1220x2440x9-30mm 1525x2440x9-30mm 1830x2440x9-30mm
Glue	E ₁ E ₂ E ₀ CARB
Density	700kgs/m ³



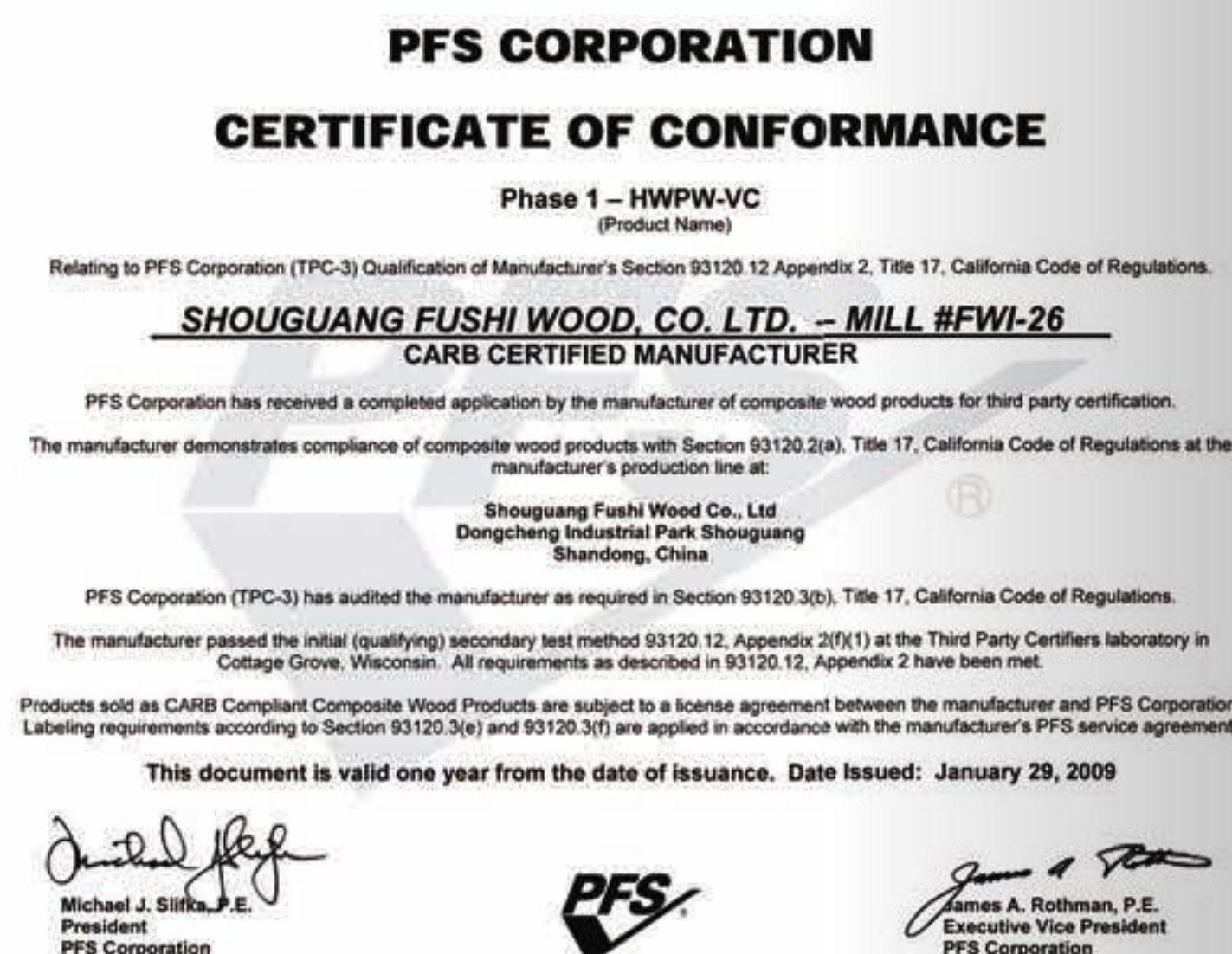
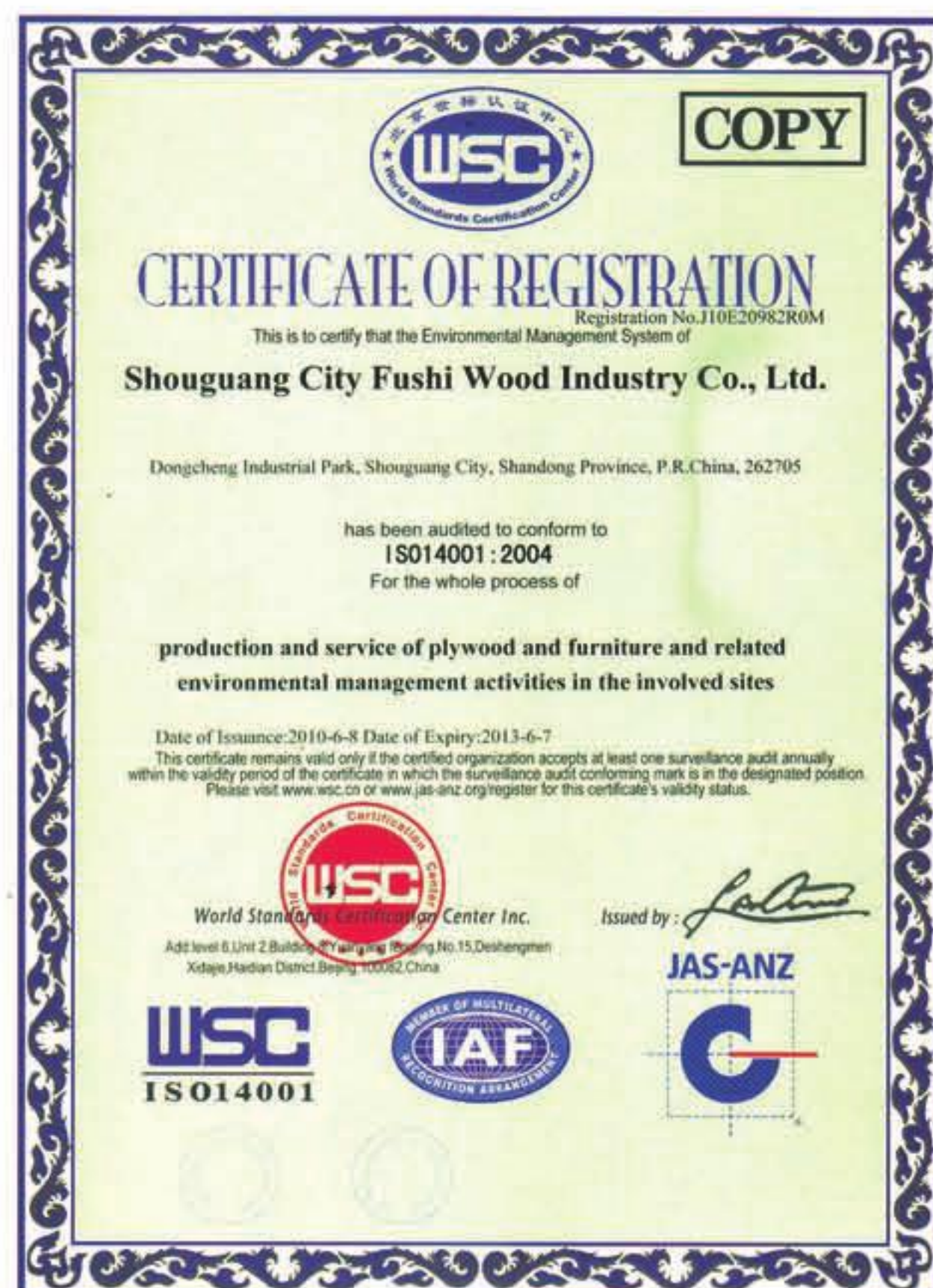
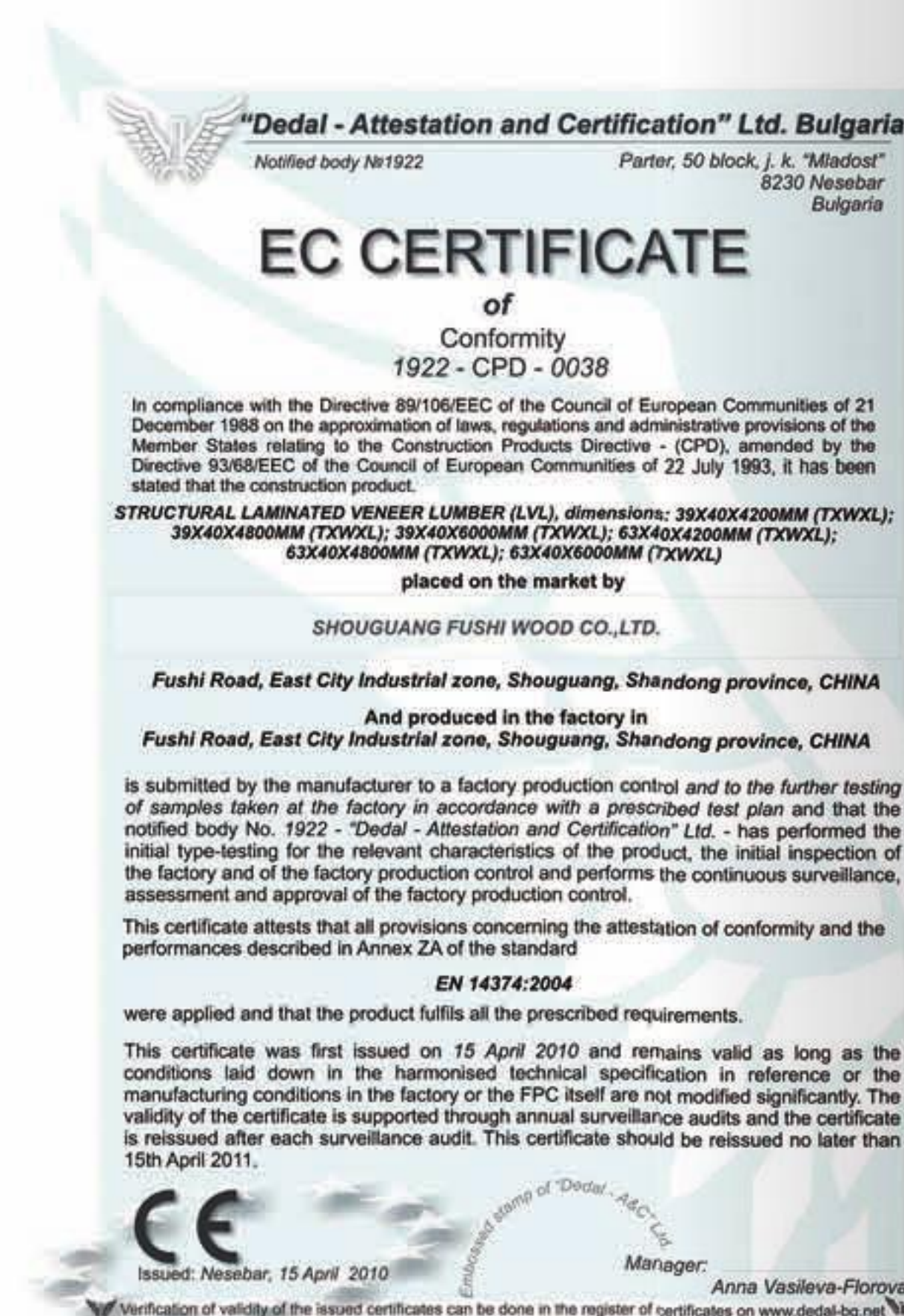
OSB

Size	1220*2440*9-25MM 1250*2500*9-25MM
Glue	Melamine WBP
Density	700kgs/m ³





CERTIFICATES



CONTACT US

FUSHI WOOD GROUP

—PLYWOOD /LVL/MDF/PB MANUFACTURER

Melon Yang
Professional Marketing MG over 10 years

Add: No.2399 Fushi Street,
Shouguang, Shandong Province, China
E-mail: melonyang@fushiwood.com
Whatsapp/Viber: 86-18765164030
Mobile: 86-18765164030
Skype: xyyang555
Q Q : 464218848
Tel: 86-536-5678898
Fax: 86-536-5671769

