



# ALTINYALDIZ®

Uluslararası Uzay Sistem Konstrüksiyonları Sanayi ve Ticaret Anonim Şirketi  
International Space Frame Construction Industry and Commerce Joint Stock Co.

## General Presentation

*Quality & Safety in Space Frame Systems  
since 1970*

### Ofis



Harbiye Mahallesi. Teşvikiye Caddesi.  
İkbal İş Merkezi. No:17. Kat:5. Daire:22-23  
34367/ Teşvikiye İstanbul Türkiye



Tel. +90 212 261 84 48 / 84 99  
Fax. +90 212 258 81 09



info@altinyaldiz.com.tr  
altinyaldiz@altinyaldiz.com.tr



<http://www.altinyaldiz.com.tr>

### Fabrika



Cumhuriyet Mahallesi. Güler Sokak  
No:26/41435. Çayırova Kocaeli Türkiye



Tel. +90 262 658 07 51  
Fax. +90 262 658 07 60



info@altinyaldiz.com.tr  
altinyaldiz@altinyaldiz.com.tr



<http://www.altinyaldiz.com.tr>



# Space Frame System

Wide range of materials can be used for cladding for space Frame structures such as sandwich panels, standing seam cladding, corrugated sheet claddings, glazing, polycarbonate sheets.

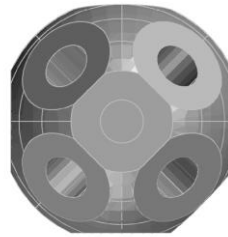
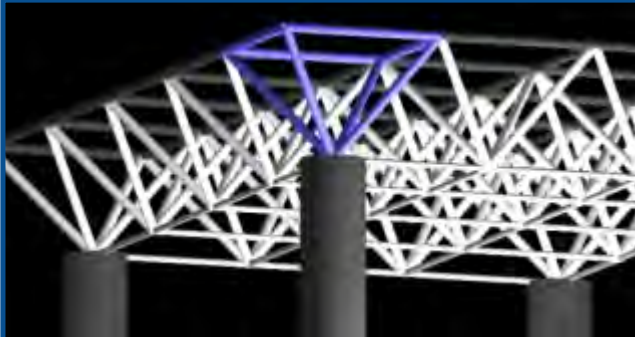




# ALTINYALDIZ®

Uluslararası Uzay Sistem Konstrüksiyonları Sanayi ve Ticaret Anonim Şirketi  
International Space Frame Construction Industry and Commerce Joint Stock Co.

## Advantages



- Lower infrastructure costs due to light structure
- Cost advantage compared to steel and concrete structure systems
- Allowance for different geometric design solutions
- Continuous design & engineering support from our experienced technical team
- Accurate manufacturing and installation
- Easy adaptation & connection to steel and reinforced concrete beams and columns
- Facilitation to connect suspended ceilings & ventilation systems due to modular structure
- Hot dipped galvanized & powder coated fabrication against corrosion
- Advantage of painting inner sides of pipes with primer by special equipment against corrosion
- Easy transportation
- Short construction time period at site
- Easy and fast disassembly



### Fields of Activities:

- 1-Cement plants
- 2-Coal and Sulphur Plants
- 3-Swimming Pools
- 4-Shopping Malls
- 5-Military Facilities
- 6-Aircraft Hangars
- 7-Terminal Buildings
- 8-Mosques
- 9-Industrial Buildings
- 10- Sports Halls
- 11- Logistics Facilities
- 12- Entertainment Halls
- 13- Multipurpose Halls
- 14- Airports
- 15- Showrooms & Museums
- 16- Ice Hockey Arenas
- 17- Storage Buildings
- 18- Cold Storage Buildings





# ALTINYALDIZ®

Uluslararası Uzay Sistem Konstrüksiyonları Sanayi ve Ticaret Anonim Şirketi  
International Space Frame Construction Industry and Commerce Joint Stock Co.

## Technical Department



Altinyaldiz Technical Department designs the space frame with all technical drawings and structural calculations . Altinyaldiz Design Office is located in İstanbul having 8 experienced engineers and 7 experienced draftsmen.

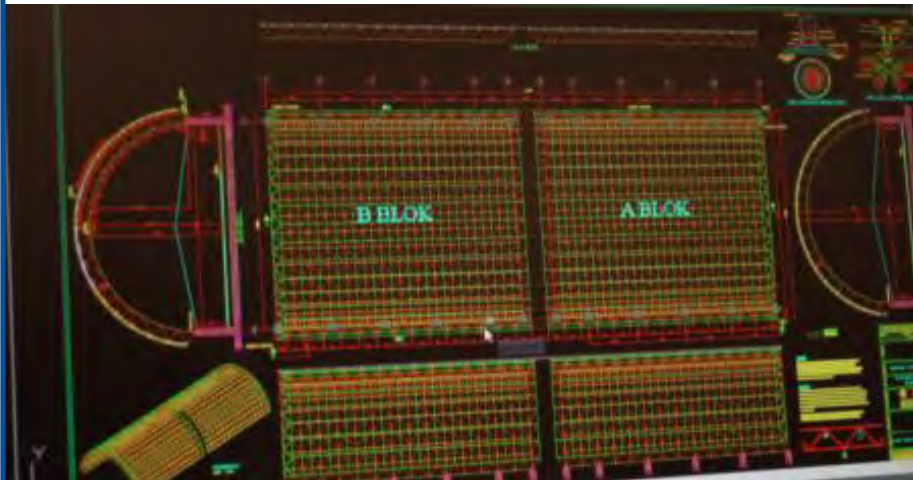
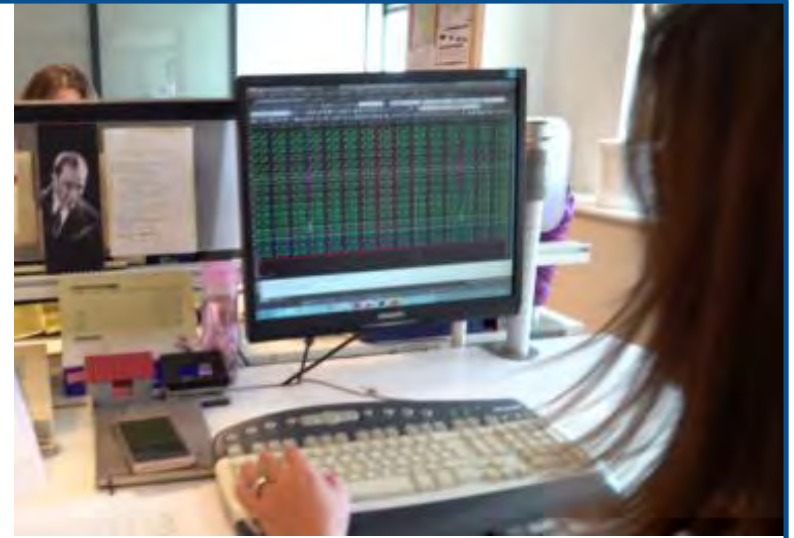
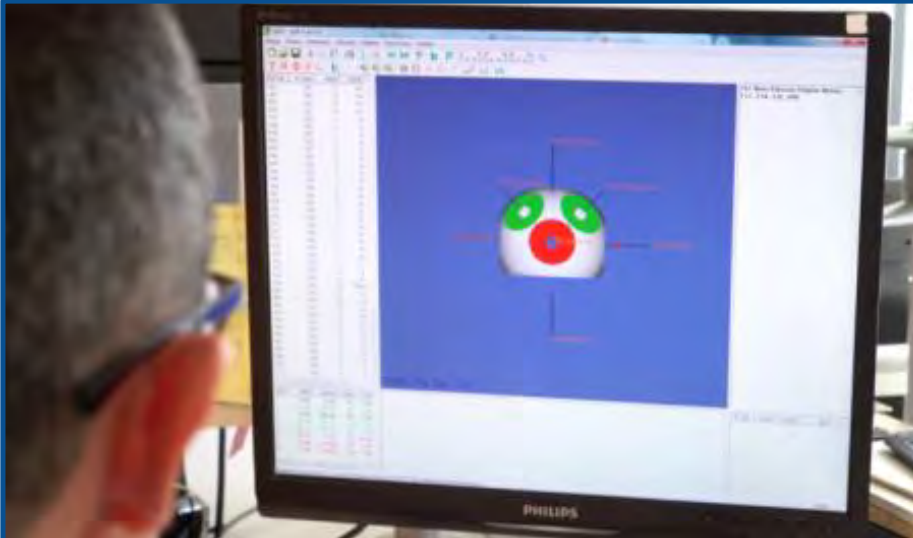




# ALTINYALDIZ®

Uluslararası Uzay Sistem Konstrüksiyonları Sanayi ve Ticaret Anonim Şirketi  
International Space Frame Construction Industry and Commerce Joint Stock Co.

## Technical Department





# ALTINYALDIZ®

Uluslararası Uzay Sistem Konstrüksiyonları Sanayi ve Ticaret Anonim Şirketi  
International Space Frame Construction Industry and Commerce Joint Stock Co.

## Factory & Production



Our factory in Gebze Şekerpinar has 10.000 m2 closed area.





# ALTINYALDIZ®

Uluslararası Uzay Sistem Konstrüksiyonları Sanayi ve Ticaret Anonim Şirketi  
International Space Frame Construction Industry and Commerce Joint Stock Co.

## Factory



- The biggest space frame production facility in Türkiye, Middle East and Africa
- Located on 10.000 m2 closed area
- Annual space frame production capacity of 1.000.000 m2 / year
- Specialized only on manufacturing of space frame systems
- Special chemical surface treatment baths including phosphating prior to powder coating process
- Fully computerized powder coating lines
- Advantage of painting inner sides of pipes with primer by special equipment, against corrosion
- 4 units of semi-automatic gas welding stations
- 5 units of 5-Axis Vertical Machining CNC Centers with double-decked pre-loading capability
- High quality control standards, operating under ISO 9001, ISO 14001, OHSAS 18001, CE standards&certification
- Hot-dipped galvanized and powder coating space frame production upon request





# ALTINYALDIZ®

Uluslararası Uzay Sistem Konstrüksiyonları Sanayi ve Ticaret Anonim Şirketi  
International Space Frame Construction Industry and Commerce Joint Stock Co.

## Production



Pipe and Profile Raw Materials Incoming & Stock Area



# ALTINYALDIZ®

Uluslararası Uzay Sistem Konstrüksiyonları Sanayi ve Ticaret Anonim Şirketi  
International Space Frame Construction Industry and Commerce Joint Stock Co.

## Production



5 axis CNC Stations ( 5 units )





# ALTINYALDIZ®

Uluslararası Uzay Sistem Konstrüksiyonları Sanayi ve Ticaret Anonim Şirketi  
International Space Frame Construction Industry and Commerce Joint Stock Co.

## Production



Chemical Cleaning Baths for Surface Treatment before Powder Coating





# ALTINYALDIZ®

Uluslararası Uzay Sistem Konstrüksiyonları Sanayi ve Ticaret Anonim Şirketi  
International Space Frame Construction Industry and Commerce Joint Stock Co.

## Production



Electro Statical Powder Coating Station & Pipe inner surface Painting



# ALTINYALDIZ®

Uluslararası Uzay Sistem Konstrüksiyonları Sanayi ve Ticaret Anonim Şirketi  
International Space Frame Construction Industry and Commerce Joint Stock Co.

## Production



Nut, Bolt, Pin Processing Area





# ALTINYALDIZ®

Uluslararası Uzay Sistem Konstrüksiyonları Sanayi ve Ticaret Anonim Şirketi  
International Space Frame Construction Industry and Commerce Joint Stock Co.

## Loading & Transportation in Turkey



Domestic Packages/ Pallets & Loading





# ALTINYALDIZ®

Uluslararası Uzay Sistem Konstrüksiyonları Sanayi ve Ticaret Anonim Şirketi  
International Space Frame Construction Industry and Commerce Joint Stock Co.

## Export Loading & Transportation



Export Packages/ Pallets & Loading



# **ALTINYALDIZ®**

Uluslararası Uzay Sistem Konstrüksiyonları Sanayi ve Ticaret Anonim Şirketi  
International Space Frame Construction Industry and Commerce Joint Stock Co.

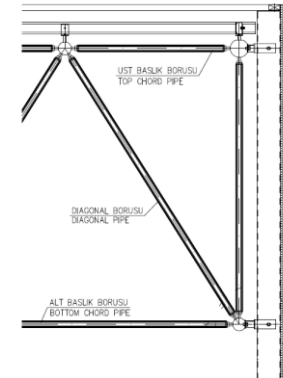
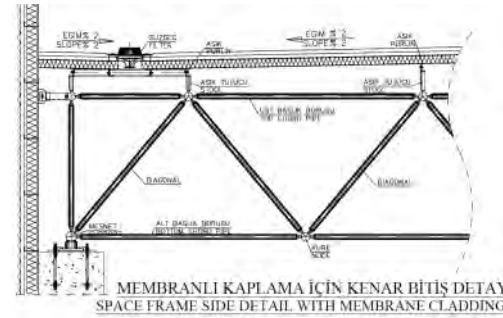
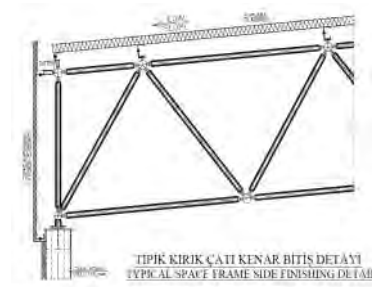
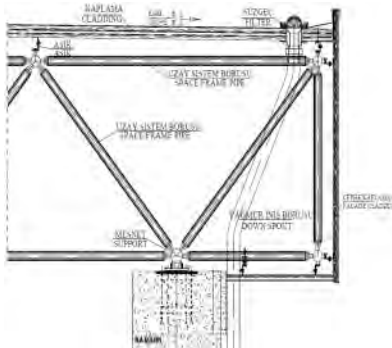
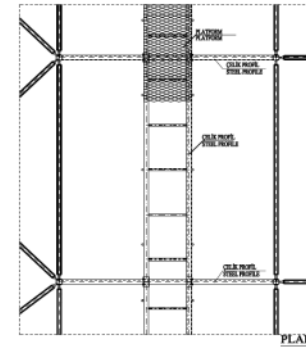
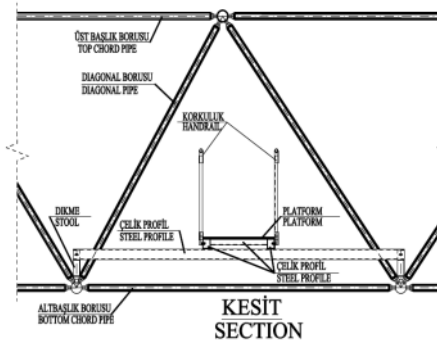
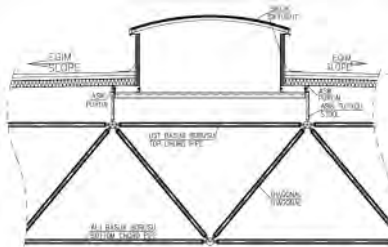
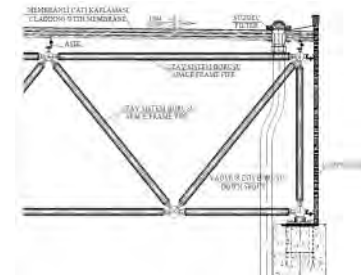
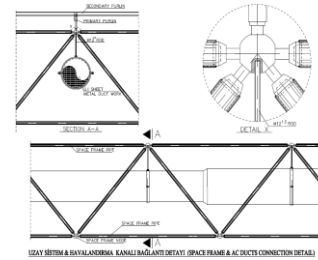
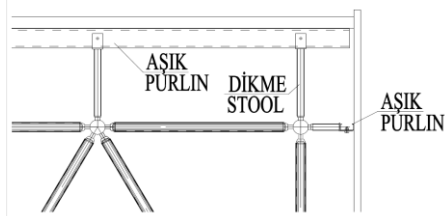
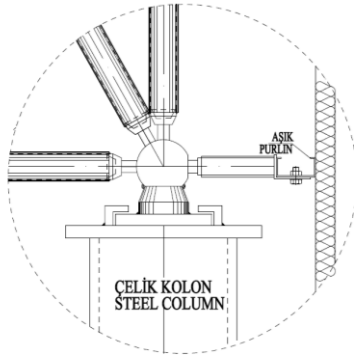
## Technical Details & Space Frame Components



# ALTINYALDIZ®

Uluslararası Uzak Sistem Konstrüksiyonları Sanayi ve Ticaret Anonim Şirketi  
International Space Frame Construction Industry and Commerce Joint Stock Co.

## Details



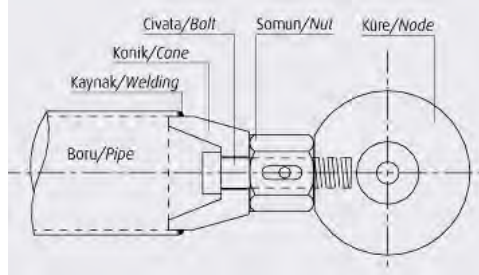
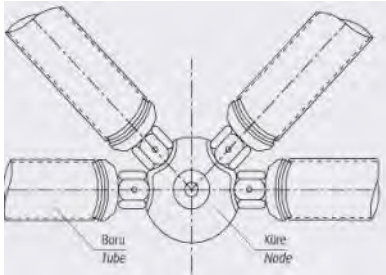




# ALTINYALDIZ®

Uluslararası Uzay Sistem Konstrüksiyonları Sanayi ve Ticaret Anonim Şirketi  
International Space Frame Construction Industry and Commerce Joint Stock Co.

## Space Frame Components



### Related Documents

- Ş-LOJ-1 Hot dip galvanizing specification
- Ş-LOJ-10 Pipe specification
- T-KM-GK-1 Direction of pipe entry control
- T-PK-2 Direction of pipe cutting process control
- T-PK-3 Direction of welding process control
- T-PK-4 Direction of penetrant test
- T-ÜRT-1 Direction of pipe/profile cutting
- T-ÜRT-2 Direction of opening hole of bolt
- T-ÜRT-3 Direction of pipe deburring
- T-ÜRT-5 Direction of pipe-cone welding
- T-ÜRT-15 Direction of roughening hot dip galvanized parts
- T-PK-9 Direction of tensile/compression test

### Related standards

- TS EN 10219 Cold formed welded structural hollow sections of non-alloy and fine grain steels
- TS EN 10025-2 Hot rolled products of structural steels - Part 2: Technical delivery conditions for non-alloy structural steels
- TS EN 1461 Hot dip galvanized coatings on fabricated iron and steel articles - specification and test methods

## Space Frame Pipes



# ALTINYALDIZ®

Uluslararası Uzay Sistem Konstrüksiyonları Sanayi ve Ticaret Anonim Şirketi  
International Space Frame Construction Industry and Commerce Joint Stock Co.

## Space Frame Components



### Related Documents

Ş-LOJ-2 Electroplating specification

Ş-LOJ-3 Node specifications

T-KM-GK-4 Direction of node entry  
quality control

T-KM-GK-8 Direction of  
electroplated material entry quality control

T-PK-1 Direction of node process control

T-ÜRT-13 Direction of node production

T-ÜRT-14 Direction of node final works

### Related standards

TS EN 10083-2 Quenched and tempered steels - Part 2:  
Technical delivery conditions for unalloyed quality  
steels

TS EN 10060 Hot rolled round steel bars for general  
purposes - Dimensions and tolerances on shape and  
dimension

TS149 Protective Coatings Used on Iron and Steel  
Parts

## Space Frame Nodes



# ALTINYALDIZ®

Uluslararası Uzay Sistem Konstrüksiyonları Sanayi ve Ticaret Anonim Şirketi  
International Space Frame Construction Industry and Commerce Joint Stock Co.

## Space Frame Components

### Bolts

#### Related Standards / Material

TS EN 10083 Quenched and tempered steels  
TS10683 Fasteners-Non-electrolytically applied zinc flake coatings  
TS ISO 898-1 Mechanical properties of fasteners made of carbon steel and alloy steel - Part 1: Bolts, screws and studs  
SAE 4140

#### Related Documents

Ş-LOJ-11 Space bolt specification  
T-KM-GK-7 Direction of space bolt entry quality control report  
20 XXX YYY coded space bolt technical drawings



### Cones

#### Related Documents

Ş-LOJ-4 Cone specification  
T-KM-GK-11 Direction of cone entry quality control  
T-PK-3 Direction of welding process control  
T-PK-4 Direction of penetrant test  
T-ÜRT-18 Direction of cone works  
The codes are started with 50-51, cone technical drawings

#### Related standards

TS EN 10277-2 Bright steel products- Technical delivery condition-Part 2:  
Steel for general engineering purposes  
TS EN 10278 Bright steel products- Boyutlar ve toleranslar  
TS EN Hot rolled round steel bars for general purposes  
Dimensions and tolerances on shape and dimensions  
TS EN 10025-2 Hot rolled products of structural steels  
Part 2: Technical delivery conditions for non-alloy structural steels







# ALTINYALDIZ®

Uluslararası Uzay Sistem Konstrüksiyonları Sanayi ve Ticaret Anonim Şirketi  
International Space Frame Construction Industry and Commerce Joint Stock Co.

## Space Frame Components

### Pins

#### Related Standards/Material

Material: 8.8 Quality

TS149 Protective Coatings  
Used on Iron and Steel Parts

#### Related Documents

Ş-LOJ-21 Pin specification

T-KM-GK-13 Direction of pin entry quality control



### Nuts

#### Related Standards/Material

Material: SAE 1040

TS EN1461 Hot dip galvanized coatings on fabricated iron and steel articles - specification and test methods

#### Related Documents

Ş-LOJ-9 Hexagonal mill specification

Ş-LOJ-12 Space hex nut machining specification

T-KM-GK-12 Direction of entry space hex nut entry quality control





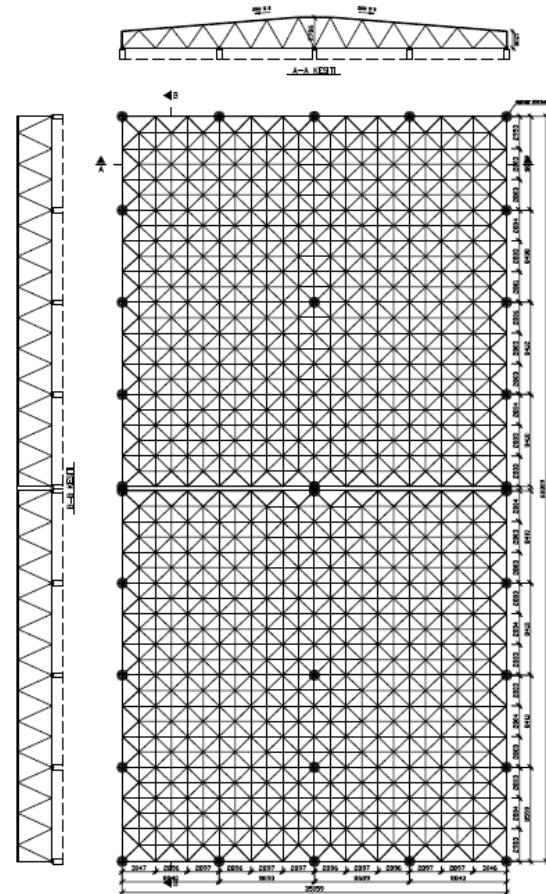
# **ALTINYALDIZ®**

Uluslararası Uzay Sistem Konstrüksiyonları Sanayi ve Ticaret Anonim Şirketi  
International Space Frame Construction Industry and Commerce Joint Stock Co.

## Shapes of Space Frame Applications



# Shapes of Applications



## 1-Plane Surface Shaped Systems

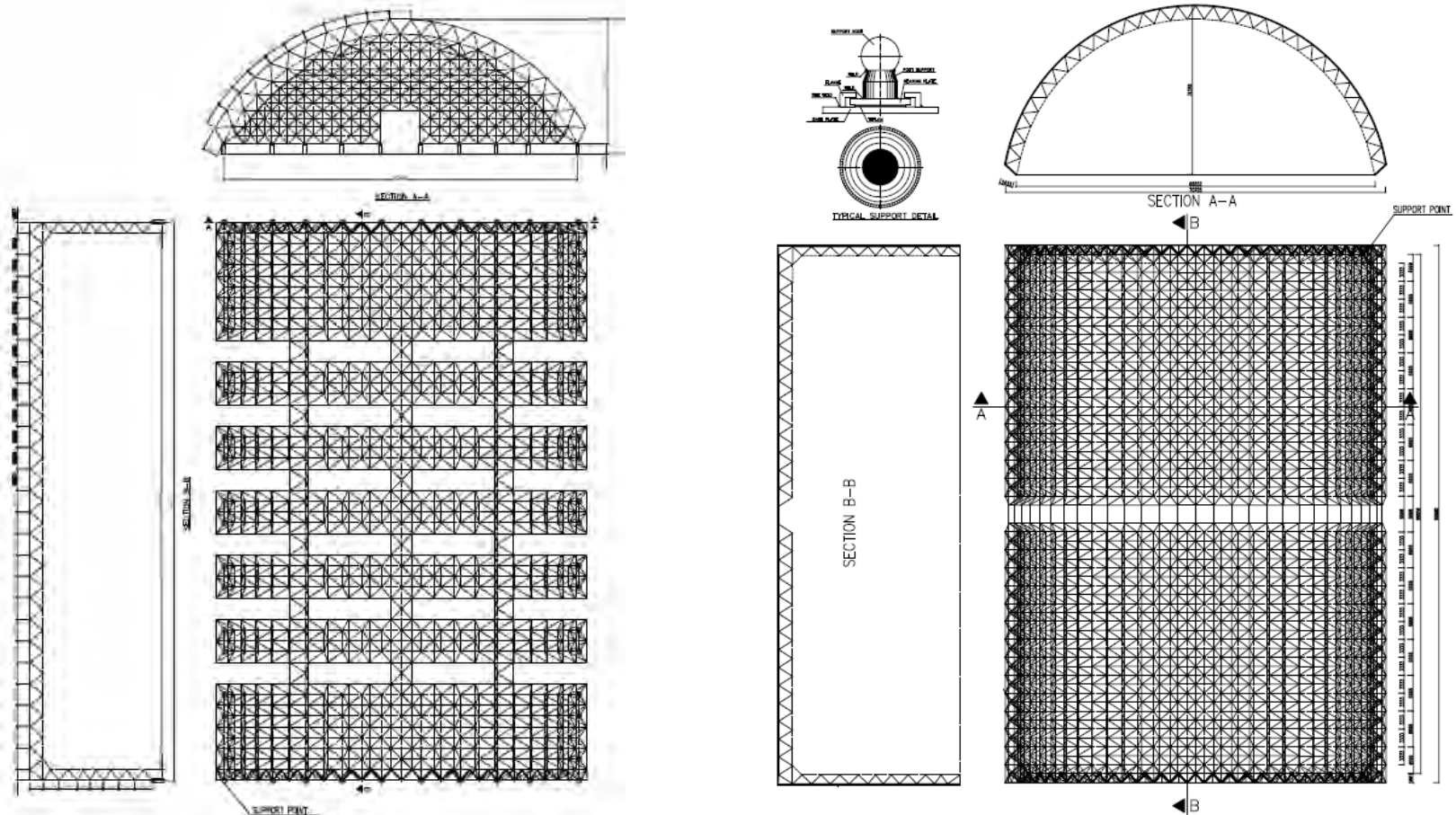




# ALTINYALDIZ®

Uluslararası Uzay Sistem Konstrüksiyonları Sanayi ve Ticaret Anonim Şirketi  
International Space Frame Construction Industry and Commerce Joint Stock Co.

## Shapes of Applications



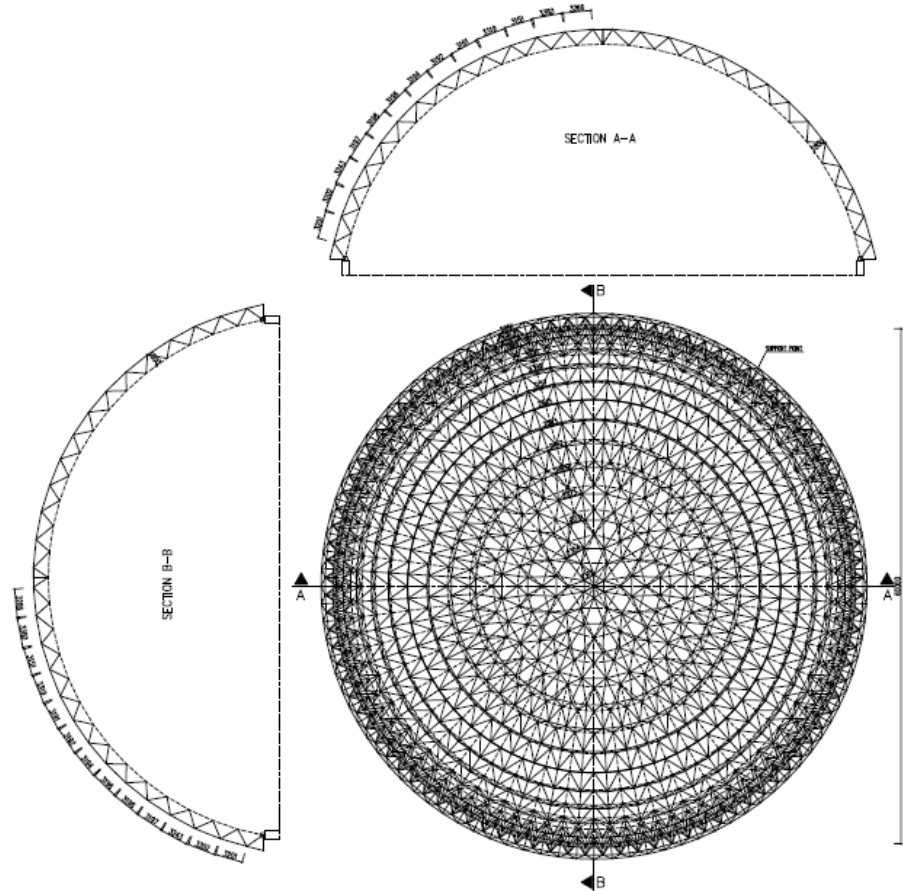
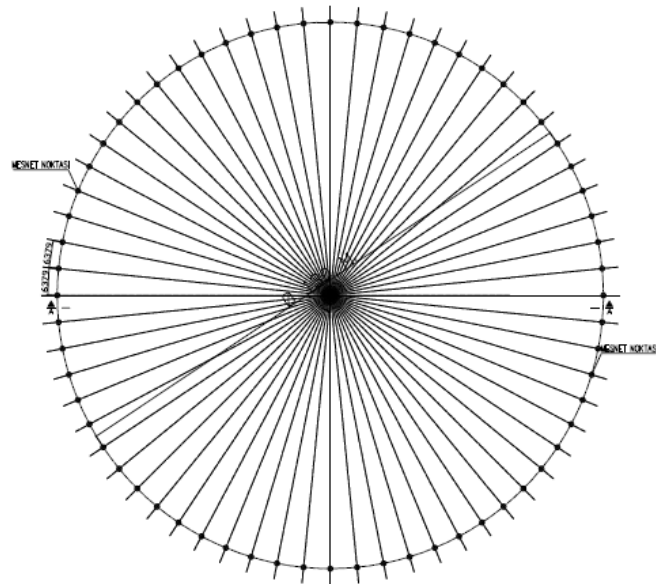
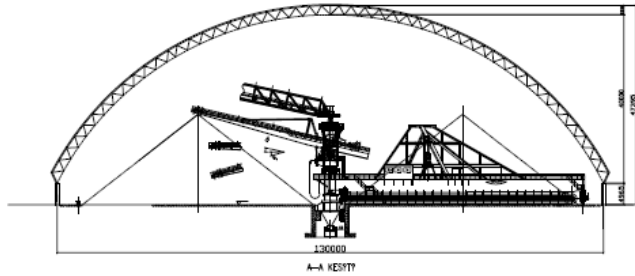
2-Vault Systems



# ALTINYALDIZ®

Uluslararası Uzay Sistem Konstrüksiyonları Sanayi ve Ticaret Anonim Şirketi  
International Space Frame Construction Industry and Commerce Joint Stock Co.

## Shapes of Applications



## 3-Dome Systems



# **ALTINYALDIZ®**

Uluslararası Uzay Sistem Konstrüksiyonları Sanayi ve Ticaret Anonim Şirketi  
International Space Frame Construction Industry and Commerce Joint Stock Co.

## Space Frame Installation Steps





# ALTINYALDIZ®

Uluslararası Uzay Sistem Konstrüksiyonları Sanayi ve Ticaret Anonim Şirketi  
International Space Frame Construction Industry and Commerce Joint Stock Co.

## Installation Steps





# ALTINYALDIZ®

Uluslararası Uzay Sistem Konstrüksiyonları Sanayi ve Ticaret Anonim Şirketi  
International Space Frame Construction Industry and Commerce Joint Stock Co.

## Installation Steps



Unloading the Pallets to the Site

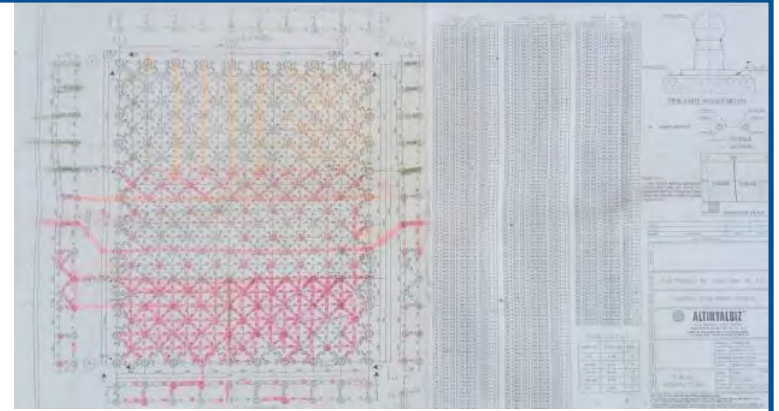




# ALTINYALDIZ®

Uluslararası Uzay Sistem Konstrüksiyonları Sanayi ve Ticaret Anonim Şirketi  
International Space Frame Construction Industry and Commerce Joint Stock Co.

## Installation Steps



Segregation of Materials According to Installation Referans Numbers

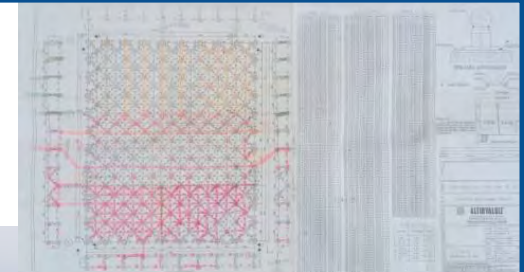




# ALTINYALDIZ®

Uluslararası Uzay Sistem Konstrüksiyonları Sanayi ve Ticaret Anonim Şirketi  
International Space Frame Construction Industry and Commerce Joint Stock Co.

## Installation Steps



Building the Space Frame System Modules on the Ground Level



# ALTINYALDIZ®

Uluslararası Uzay Sistem Konstrüksiyonları Sanayi ve Ticaret Anonim Şirketi  
International Space Frame Construction Industry and Commerce Joint Stock Co.

## Installation Steps



Lifting the Portions from the Ground Level to the Actual Location



# ALTINYALDIZ®

Uluslararası Uzay Sistem Konstrüksiyonları Sanayi ve Ticaret Anonim Şirketi  
International Space Frame Construction Industry and Commerce Joint Stock Co.

## Installation Steps



Assembly of the Lifted Portions to each other.





# **ALTINYALDIZ®**

Uluslararası Uzay Sistem Konstrüksiyonları Sanayi ve Ticaret Anonim Şirketi  
International Space Frame Construction Industry and Commerce Joint Stock Co.

## Major Completed Projects



# ALTINYALDIZ®

Uluslararası Uzay Sistem Konstrüksiyonları Sanayi ve Ticaret Anonim Şirketi  
International Space Frame Construction Industry and Commerce Joint Stock Co.

## Projects



TURKISH METAL SYNDICATE – Sports Hall - 1994 - Ankara / TURKEY  
4.700 m<sup>2</sup>

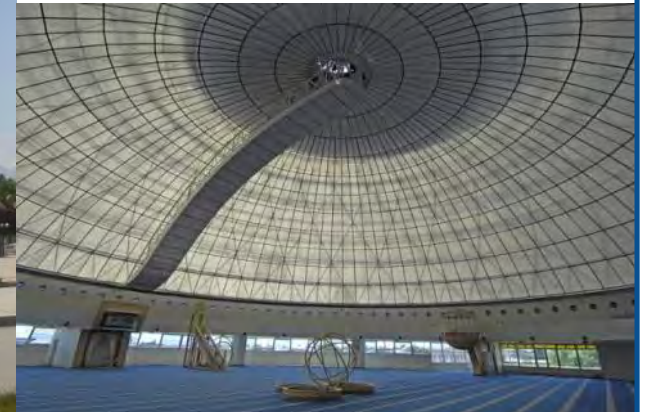




# ALTINYALDIZ®

Uluslararası Uzay Sistem Konstrüksiyonları Sanayi ve Ticaret Anonim Şirketi  
International Space Frame Construction Industry and Commerce Joint Stock Co.

## Projects



ERZINCAN MUNICIPALITY - Terzibaba Mosque - Dome - 1995 - Erzincan / TURKEY  
1.800 m<sup>2</sup> Diameter 35 m





# ALTINYALDIZ®

Uluslararası Uzay Sistem Konstrüksiyonları Sanayi ve Ticaret Anonim Şirketi  
International Space Frame Construction Industry and Commerce Joint Stock Co.

## Projects



Preblending Unit - 2002 - Çanakkale / TURKEY  
19.000 m<sup>2</sup>      Diameter 132 m



# ALTINYALDIZ®

Uluslararası Uzay Sistem Konstrüksiyonları Sanayi ve Ticaret Anonim Şirketi  
International Space Frame Construction Industry and Commerce Joint Stock Co.

## Projects



Preblending Unit - 2002 - Çanakkale / TURKEY  
19.000 m<sup>2</sup>      Diameter 132 m





# ALTINYALDIZ®

Uluslararası Uzay Sistem Konstrüksiyonları Sanayi ve Ticaret Anonim Şirketi  
International Space Frame Construction Industry and Commerce Joint Stock Co.

## Projects



TAV – Tbilisi Airport - 2006 - Tbilisi / GEORGIA  
11.500 m<sup>2</sup> Span 40,70 m





# ALTINYALDIZ®

Uluslararası Uzak Sistem Konstrüksiyonları Sanayi ve Ticaret Anonim Şirketi  
International Space Frame Construction Industry and Commerce Joint Stock Co.

## Projects



RUSSIA FEDERATION – Ice Hockey Arena - 2007 - Khanty-Mansiysk / RUSSIA  
9.000 m<sup>2</sup>



# ALTINYALDIZ®

Uluslararası Uzay Sistem Konstrüksiyonları Sanayi ve Ticaret Anonim Şirketi  
International Space Frame Construction Industry and Commerce Joint Stock Co.

## Projects



Circus - 2011 - Turkmenbashi / TURKMENISTAN  
4.500 m<sup>2</sup>





# ALTINYALDIZ®

Uluslararası Uzay Sistem Konstrüksiyonları Sanayi ve Ticaret Anonim Şirketi  
International Space Frame Construction Industry and Commerce Joint Stock Co.

## Projects



Dubai Aircraft Hangar - Vault - 2012 - Dubai / UAE  
6.800 m<sup>2</sup> Span 65 m





# ALTINYALDIZ®

Uluslararası Uzay Sistem Konstrüksiyonları Sanayi ve Ticaret Anonim Şirketi  
International Space Frame Construction Industry and Commerce Joint Stock Co.

## Projects



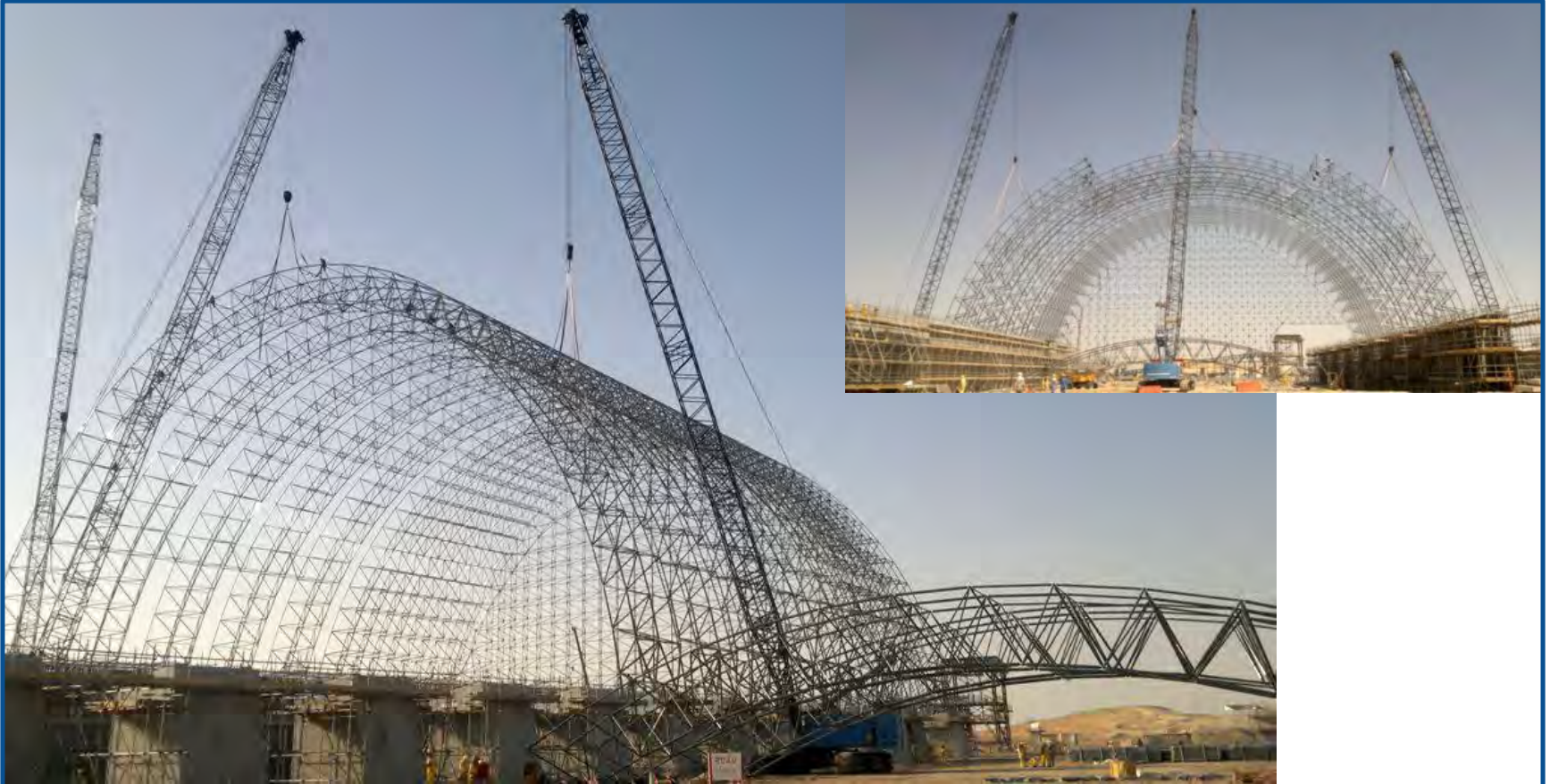
Dubai Aircraft Hangar - Vault - 2012 - Dubai / UAE  
6.800 m<sup>2</sup> Span 65 m



# ALTINYALDIZ®

Uluslararası Uzay Sistem Konstrüksiyonları Sanayi ve Ticaret Anonim Şirketi  
International Space Frame Construction Industry and Commerce Joint Stock Co.

## Projects



Sulphur Storages - 2012 – Ruwais & Habshan- Abu Dhabi / UAE  
50.000 m<sup>2</sup> + 100.000 m<sup>2</sup>      Spans 83 m





# ALTINYALDIZ®

Uluslararası Uzay Sistem Konstrüksiyonları Sanayi ve Ticaret Anonim Şirketi  
International Space Frame Construction Industry and Commerce Joint Stock Co.

## Projects



Preblending & Additive Storages - 2013 - İskenderun / TURKEY  
45.000 m<sup>2</sup>      Spans 52 m & Diameter 98m





# ALTINYALDIZ®

Uluslararası Uçay Sistem Konstrüksiyonları Sanayi ve Ticaret Anonim Şirketi  
International Space Frame Construction Industry and Commerce Joint Stock Co.

## Projects



MALTA AIRCRAFT HANGAR - Vault - 2014 - Malta  
2.500 m<sup>2</sup> x 3 units      Span 60 m



# ALTINYALDIZ®

Uluslararası Uzay Sistem Konstrüksiyonları Sanayi ve Ticaret Anonim Şirketi  
International Space Frame Construction Industry and Commerce Joint Stock Co.

## Projects



MALTA AIRCRAFT HANGAR - Vault - 2014 - Malta  
2.500 m<sup>2</sup> x 3 units      Span 60 m





# ALTINYALDIZ®

Uluslararası Uzay Sistem Konstrüksiyonları Sanayi ve Ticaret Anonim Şirketi  
International Space Frame Construction Industry and Commerce Joint Stock Co.

## Projects



Preblending & Additive Storages - 2016 - Afyonkarahisar / TURKEY  
45.000 m<sup>2</sup>      Spans 65 m & Diameter 100 m





# ALTINYALDIZ®

Uluslararası Uzay Sistem Konstrüksiyonları Sanayi ve Ticaret Anonim Şirketi  
International Space Frame Construction Industry and Commerce Joint Stock Co.

## Projects



Sivas Votorantim Preblending Unit- 2016 – Sivas - TURKEY  
12.000 m<sup>2</sup> Height 30 mt & Diameter 100 m



# ALTINYALDIZ®

Uluslararası Uzay Sistem Konstrüksiyonları Sanayi ve Ticaret Anonim Şirketi  
International Space Frame Construction Industry and Commerce Joint Stock Co.

## Projects



Preblending & Katkı Stokholleri- 2016 – Ankara - TÜRKİYE  
17.000 + 12.000 m<sup>2</sup> Açıklık 55 mt & Çap 100 m





# ALTINYALDIZ®

Uluslararası Uzay Sistem Konstrüksiyonları Sanayi ve Ticaret Anonim Şirketi  
International Space Frame Construction Industry and Commerce Joint Stock Co.

## Projects



Preblending & Coal Storages - 2017 - Söke / Aydın / TURKEY  
30.000 m2





# ALTINYALDIZ®

Uluslararası Uzay Sistem Konstrüksiyonları Sanayi ve Ticaret Anonim Şirketi  
International Space Frame Construction Industry and Commerce Joint Stock Co.

## Projects



Preblending Unit - 2017 - Söke / Aydın / TURKEY  
14.850 m<sup>2</sup>      Diameter 110 m



# ALTINYALDIZ®

Uluslararası Uzay Sistem Konstrüksiyonları Sanayi ve Ticaret Anonim Şirketi  
International Space Frame Construction Industry and Commerce Joint Stock Co.

## Projects



Salwa Resort - Dahab Mountains Water & Adventure Park – 2018 – Doha / QATAR  
22.000 m<sup>2</sup>





# ALTINYALDIZ®

Uluslararası Uzay Sistem Konstrüksiyonları Sanayi ve Ticaret Anonim Şirketi  
International Space Frame Construction Industry and Commerce Joint Stock Co.

## Projects



Additive & Coal Storage - 2018 - Soma / Manisa / TURKEY  
14.800 + 20.200 m<sup>2</sup>      Spans 46 m & 60 m



# ALTINYALDIZ®

Uluslararası Uzay Sistem Konstrüksiyonları Sanayi ve Ticaret Anonim Şirketi  
International Space Frame Construction Industry and Commerce Joint Stock Co.

## Projects



BİM Iğdır Logistic Warehouse – 2018 – Iğdır / TURKEY

11.140 m2





# ALTINYALDIZ®

Uluslararası Uzay Sistem Konstrüksiyonları Sanayi ve Ticaret Anonim Şirketi  
International Space Frame Construction Industry and Commerce Joint Stock Co.

## Projects



Preblending Unit - 2018 - Soma / Manisa / TURKEY  
12.100 m<sup>2</sup> Diameter 100 m



# ALTINYALDIZ®

Uluslararası Uzay Sistem Konstrüksiyonları Sanayi ve Ticaret Anonim Şirketi  
International Space Frame Construction Industry and Commerce Joint Stock Co.

## Projects



Additive, Coal Storages & Preblending - 2018 - / Manisa / TURKEY  
Total : 47.100 m<sup>2</sup>





# ALTINYALDIZ®

Uluslararası Uzay Sistem Konstrüksiyonları Sanayi ve Ticaret Anonim Şirketi  
International Space Frame Construction Industry and Commerce Joint Stock Co.

## Projects



Dinçer Çimento Preblending Unit - 2018 - Bilecik - TURKEY  
8.450 m<sup>2</sup>      Height 25 m      Diameter 88 m



# ALTINYALDIZ®

Uluslararası Uzay Sistem Konstrüksiyonları Sanayi ve Ticaret Anonim Şirketi  
International Space Frame Construction Industry and Commerce Joint Stock Co.

## Projects



ŞİŞECAM A.Ş. – Fiber Processing Facility - 2018 - Balıkesir / TURKEY  
30.000 m2





# ALTINYALDIZ®

Uluslararası Uzay Sistem Konstrüksiyonları Sanayi ve Ticaret Anonim Şirketi  
International Space Frame Construction Industry and Commerce Joint Stock Co.

## Projects



Additive Storage - Vault - 2018 - Abidjan / IVORY COST  
19.000 m<sup>2</sup>      Span 60 m      Height 28 m



# ALTINYALDIZ®

Uluslararası Uzay Sistem Konstrüksiyonları Sanayi ve Ticaret Anonim Şirketi  
International Space Frame Construction Industry and Commerce Joint Stock Co.

## Projects



Soma Kolin Thermal Power Plant- 2019 - Soma - Manisa / TURKEY  
37.500 m<sup>2</sup> Span 100 m





# ALTINYALDIZ®

Uluslararası Uzay Sistem Konstrüksiyonları Sanayi ve Ticaret Anonim Şirketi  
International Space Frame Construction Industry and Commerce Joint Stock Co.

## Projects



Başakşehir Dry Food Market Streets & Canopies– 2021 – İstanbul / TURKEY  
30.000 m2



# **ALTINYALDIZ®**

Uluslararası Uzay Sistem Konstrüksiyonları Sanayi ve Ticaret Anonim Şirketi  
International Space Frame Construction Industry and Commerce Joint Stock Co.

## Completed Projects References





# ALTINYALDIZ®

Uluslararası Uzak Sistem Konstrüksiyonları Sanayi ve Ticaret Anonim Şirketi  
International Space Frame Construction Industry and Commerce Joint Stock Co.

## References

| Project Name                             | Country      | Year | Area -M <sup>2</sup> | Project Name                                    | Country      | Year | Area -M <sup>2</sup> |
|--|--------------|------|----------------------|---|--------------|------|----------------------|
| Nurhas Tekstil Örne Factory              | Türkiye      | 2023 | 4.317                | Merba Yapı Factory                              | Türkiye      | 2022 | 6.409                |
| Koçaeli Warehouses                       | Türkiye      | 2023 | 6.000                | Tex-Ankara Logistics Warehouse                  | Türkiye      | 2022 | 12.648               |
| Diyarbakır Logistics Warehouses          | Türkiye      | 2023 | 39.514               | Modern Karton - Çorlu Production Facility       | Türkiye      | 2022 | 1.208                |
| Manisa OSB Warehouse                     | Türkiye      | 2023 | 22.284               | Military Tennis Hall and Tennis&Squash Hall     | Egypt        | 2022 | 5.307                |
| Muğla Çimento Cement Factory Storages    | Türkiye      | 2023 | 19.072               | Baherden Storage Buildings                      | Turkmenistan | 2022 | 18.600               |
| Örtaş Factory                            | Türkiye      | 2023 | 10.083               | Medcem Mersin Silfke Storage Buildings          | Türkiye      | 2022 | 39.179               |
| Polimer Kimya Factory                    | Türkiye      | 2023 | 4.550                | Upper Egypt Sports Hall                         | Egypt        | 2022 | 5.525                |
| Al Khuwair Spors Hall                    | Oman         | 2023 | 1.823                | Şişecam Mersin Factory- Packaging A Block       | Türkiye      | 2022 | 7.107                |
| Crown Mall AVM Skylight                  | Palestine    | 2023 | 213                  | Galala Hospital - Patio and Enterence           | Egypt        | 2022 | 800                  |
| Senegal Basketball Hall                  | Senegal      | 2023 | 1.018                | Kerbala Truck Garage Project                    | Iraq         | 2022 | 18.834               |
| Çimsa Mersin Cement Facility Storages    | Türkiye      | 2023 | 9.887                | Dövsan Ferizli Factory                          | Türkiye      | 2021 | 2.929                |
| Sadırlar Alliance Factory Building       | Türkiye      | 2023 | 10.466               | Ansan Metal Factory                             | Türkiye      | 2021 | 4.218                |
| Şişecam Eskişehir E Furnace and Storage  | Türkiye      | 2022 | 7.661                | Soma Kolin Thermal Power Plant- Coal Storages 2 | Türkiye      | 2021 | 42.132               |
| Galva Metal Factory Extension            | Türkiye      | 2022 | 4.647                | Horn Connect                                    | Somali       | 2021 | 219                  |
| Firat Plastik Ankara Factory Extension   | Türkiye      | 2022 | 2.696                | Etimesgut Helicopter Hangar                     | Türkiye      | 2021 | 5.974                |
| Turkmenistan Trade Center                | Turkmenistan | 2022 | 1.940                | YC Inox Stainless Steel Pipe Factory            | Türkiye      | 2021 | 25.847               |
| Es-Global Eskişehir Chocolate Plant      | Türkiye      | 2022 | 21.693               | Kopugurly Sport Complex                         | Turkmenistan | 2021 | 4.494                |
| Trim Otomotiv Plant                      | Türkiye      | 2022 | 5.152                | Adana Birmot Body Shell And Service Buildings   | Türkiye      | 2021 | 5.836                |
| Canary Island Sports Area Shade          | Spain        | 2022 | 575                  | Sarp İnş. Kaynarca Furniture Factory            | Türkiye      | 2021 | 6.700                |
| Olympic Stadium Shade                    | Egypt        | 2022 | 1.015                | Biçerova Warehouse Building                     | Türkiye      | 2021 | 7.915                |
| Polatlı Kontrolmatik Plant               | Türkiye      | 2022 | 26.350               | İnal Aydınöğlu Cultural Center                  | Türkiye      | 2021 | 1.740                |
| Performance Multi Purpose Hall Shade     | Egypt        | 2022 | 15.882               | Technocast Otomotiv Çerkezköy Factory           | Türkiye      | 2021 | 4.153                |
| Adana Seyhan Automobile Showroom         | Türkiye      | 2022 | 464                  | Aksa Warehouse Loading Area Canopy              | Türkiye      | 2021 | 930                  |
| Iglesia El Santiscal Multipurpose Hall   | Spain        | 2022 | 333                  | Okumuşlar Kereste Logistik Warehouse            | Türkiye      | 2021 | 22.815               |
| Gerona Airport Shade                     | Spain        | 2022 | 185                  | Sancaktepe Warehouse Building                   | Türkiye      | 2021 | 5.390                |
| Dragon Do Son Waterpark                  | Vietnam      | 2022 | 1.666                | Seeb Stadium                                    | Oman         | 2021 | 600                  |
| Ministry of Education Bediye Sports Hall | Oman         | 2022 | 1.825                | Adana Tufanbeyli Lignite Power Plant- A4 Block  | Türkiye      | 2021 | 5.280                |
| Ministry of Education Jalan Sports Hall  | Oman         | 2022 | 1.825                | Adana Ceyhan Tayseb Free Zone Gate              | Türkiye      | 2021 | 825                  |
| Filiba Cold Storage                      | Bulgaria     | 2022 | 1.950                | Asen Metal Dilovası Factory                     | Türkiye      | 2021 | 11.200               |
| Faurecia Factory Building                | Türkiye      | 2022 | 18.737               | Oman Club Sports Hall                           | Oman         | 2021 | 1.816                |



# ALTINYALDIZ®

Uluslararası Uzak Sistem Konstrüksiyonları Sanayi ve Ticaret Anonim Şirketi  
International Space Frame Construction Industry and Commerce Joint Stock Co.

## References

| Project Name   | Country      | Year | Area -M² | Project Name  | Country         | Year | Area -M² |
|--|--------------|------|----------|---|-----------------|------|----------|
| Oman Sports Hall   | Oman         | 2021 | 1.826    | Swimming Pool Complexes                                     | Egypt           | 2019 | 7.087    |
| Bahrein Social Welfare                                     | Bahrein      | 2021 | 864      | Adana Tufanbeyli Lignite Power Plant- Lime Storage          | Türkiye         | 2019 | 2.780    |
| Victor Attah International Airport                         | Nigeria      | 2021 | 12.700   | Bak Ambalaj Extension                                       | Türkiye         | 2019 | 886      |
| Star Rafineri A.Ş.- Aliğa Gatehouse                        | Türkiye      | 2021 | 2.550    | Basketball Area Roof - Adana Tufanbeyli Lignite Power Plant | Türkiye         | 2019 | 272      |
| Başakşehir Dry Food Bazaar                                 | Türkiye      | 2021 | 30.000   | Düzce Cement Additive Storage                               | Türkiye         | 2019 | 15.441   |
| NN2 Datacenter Building                                    | Egypt        | 2020 | 1.123    | Garage Projects   | Egypt           | 2019 | 3.923    |
| Self İstanbul - Shopping Mall                              | Türkiye      | 2020 | 1.270    | Lifting Beam -48 mt.  | Italy           | 2019 | 70       |
| Gaziantep MBA Integrated Plant                             | Türkiye      | 2020 | 5.147    | Nizwa ROP - Multipurpose Hall                               | Oman            | 2019 | 2.688    |
| Mupa Ambalaj Düzce Factory                                 | Türkiye      | 2020 | 4.693    | Pelsan -Dilovası Production Facility                        | Türkiye         | 2019 | 4.516    |
| Prokom Compensator Factory                                 | Türkiye      | 2020 | 2.725    | Plastic Factory & Warehouse                                 | Palestine       | 2019 | 3.250    |
| Politem Plastik Factory                                    | Türkiye      | 2020 | 1.706    | Sadat Sports Center- Swimming Pool & Football Stadium       | Egypt           | 2019 | 1.100    |
| Scattolini Factory   | Türkiye      | 2020 | 4.180    | Shopping Mall- 2 Blocks                                     | Turkmenistan    | 2019 | 5.062    |
| Carpet Plant Extension - Dashoguz                          | Türkmenistan | 2020 | 1.707    | Şişecam Balıkesir Fiber Plant - Phase 3                     | Türkiye         | 2019 | 2.944    |
| Toy Mekan - Wedding Hall                                   | Turkmenistan | 2020 | 1.516    | Toy Mekan - Wedding Hall                                    | Turkmenistan    | 2019 | 1.681    |
| Baya Gayrimenkul A.Ş. Factory Building                     | Türkiye      | 2020 | 1.716    | Şişecam Balıkesir Phase 2                                   | Türkiye         | 2018 | 2.944    |
| İstanbul Airport B Zone Cargo building                     | Türkiye      | 2020 | 1.350    | Şişecam Eskişehir D Furnace and New Storages                | Türkiye         | 2018 | 13.470   |
| Hall 1 & 3 buildings space frame disassembly               | Türkiye      | 2020 | 18.424   | Şişecam Balıkesir Facility                                  | Türkiye         | 2018 | 30.451   |
| Hall 1 & 3 buildings space frame production & installation | Türkiye      | 2020 | 18.424   | Warrant Officers Club Sports Hall                           | Egypt           | 2018 | 3.078    |
| Nizwa Multipurpose Hall B Block                            | Oman         | 2020 | 2.354    | Officer Club Sports Hall                                    | Egypt           | 2018 | 3.078    |
| BLM- Şanlıurfa Warehouse                                   | Türkiye      | 2020 | 17.676   | St.Gabriel Coconut Oil Factory                              | Nigeria         | 2018 | 11.622   |
| Ankara- Elmadağ RDF Building                               | Türkiye      | 2019 | 1.750    | Limak Cement Plant - Additive Storage-Abidjan               | R.cote d'ivoire | 2018 | 18.737   |
| Adana Tufanbeyli Lignite Power Plant- A3 Block             | Türkiye      | 2019 | 5.273    | Alef School Project- Qassim Area                            | KSA             | 2018 | 673      |
| Factory Building Dilovası                                  | Türkiye      | 2019 | 7.971    | BLM - Iğdır Warehouse                                       | Türkiye         | 2018 | 11.140   |
| Akkim Warehouse Building                                   | Türkiye      | 2019 | 3.445    | Construction Of Sports Hall -Sultanate Of Oman              | Oman            | 2018 | 1.809    |
| Septic Tank Building                                       | Cyprus       | 2019 | 350      | Construction Of Sports Halls -Sultanate Of Oman             | Oman            | 2018 | 5.427    |
| Soma Kolin Thermal Power Plant- Coal Storages              | Türkiye      | 2019 | 37.500   | Dinçer Çimento Pre-blending Unit                            | Türkiye         | 2018 | 9.200    |
| Carpet Plant- Dashoguz                                     | Turkmenistan | 2019 | 6.968    | Dytech Kosekoy Warehouse                                    | Türkiye         | 2018 | 1.643    |
| BLM- Arnavutköy Warehouse                                  | Türkiye      | 2019 | 12.443   | Egypt International Schools                                 | Egypt           | 2018 | 5.745    |
| Salamanca Tennis Court Roof                                | Italy        | 2019 | 971      | Gebze Sultan Orhan Warehouse                                | Türkiye         | 2018 | 4.300    |
| Ashgabat Olympic Sports Faculty - Sport Complexes          | Turkmenistan | 2019 | 6.038    | Housing Authority Intermediate School & Gym                 | Kuwait          | 2018 | 4.733    |





# ALTINYALDIZ®

Uluslararası Uzak Sistem Konstrüksiyonları Sanayi ve Ticaret Anonim Şirketi  
International Space Frame Construction Industry and Commerce Joint Stock Co.

## References

| Project Name  | Country | Year | Area -M² | Project Name  | Country | Year | Area -M² |
|---|---------|------|----------|---|---------|------|----------|
| Ministry of Interior Housing Complex in Southern Border-Jazan | KSA     | 2018 | 18.396   | Ministry of Education Moaiad Albaha City Alef Project | KSA     | 2017 | 1.364    |
| Polibak Storage Project                                       | Türkiye | 2018 | 3.321    | Ministry of Education Shamal Sad Project              | KSA     | 2017 | 696      |
| Rumeli Leather Plant- Gebze                                   | Türkiye | 2018 | 2.000    | Ministry of Education Tadaruk Alef Project            | KSA     | 2017 | 682      |
| Salwa Dahab Mountains Water & Adventure Park                  | Qatar   | 2018 | 22.000   | Ministry of Education Tadaruk Sad Project             | KSA     | 2017 | 696      |
| South Border Security Housing                                 | KSA     | 2018 | 1.435    | Ministry of Education Taj Company Alef Project        | KSA     | 2017 | 682      |
| Sports Hall -Madha,Wilayat Musandam                           | Oman    | 2018 | 1.809    | Ministry of Sports – Oman – Sports Hall Project       | Oman    | 2017 | 5.400    |
| Ferizli Furniture Factory Building                            | Türkiye | 2017 | 6.807    | Murat Dökümcü Warehouse                               | Türkiye | 2017 | 5.043    |
| Soma Cement Storages  | Türkiye | 2017 | 34.960   | Najaf Airport Extension Project 2                     | Iraq    | 2017 | 5.121    |
| Bati Soke Cement Plant  | Türkiye | 2017 | 30.178   | Najaf Roof Project                                    | Iraq    | 2017 | 950      |
| BİM - Gaziantep Warehouse                                     | Türkiye | 2017 | 39.126   | North Port Multipurpose Hall                          | Kuwait  | 2017 | 343      |
| Çimsa Afyon Cement Facility                                   | Türkiye | 2017 | 47.158   | Oryx International School                             | Qatar   | 2017 | 3.600    |
| Afras University Project                                      | KSA     | 2017 | 888      | Salwa Dahab Mountains – Resort Project - Qatar        | Qatar   | 2017 | 17.000   |
| Atatürk Airport Extension Project                             | Türkiye | 2017 | 9.600    | Salwa Dahab Mountains – WaterPark - Qatar             | Qatar   | 2017 | 19.000   |
| Bin Zareb- Alef School Projects                               | KSA     | 2017 | 860      | Trabzon Port Warehouse                                | Türkiye | 2017 | 906      |
| Çorlu Kutes Moulding Plant                                    | Türkiye | 2017 | 2.506    | Trabzon Warehouse                                     | Türkiye | 2017 | 4.300    |
| Hendek Turkuvaz Plastik Factory                               | Türkiye | 2017 | 10.000   | Trakya Cam Bursa Yenişehir Plant                      | Türkiye | 2017 | 3.500    |
| K3 Shopping Mall  | KSA     | 2017 | 5.400    | Transportation Department Gate Project                | Iraq    | 2017 | 118      |
| Leaders Club Sports Hall                                      | Egypt   | 2017 | 9.250    | Tuzla Plant   | Türkiye | 2017 | 1.503    |
| Majmaah University- Main Building                             | KSA     | 2017 | 250      | Limak Anka Cement Additive & Preblending Storages     | Türkiye | 2016 | 28.501   |
| Makkah Project  | KSA     | 2017 | 500      | BİM - Adana 2nd Territory Warehouse                   | Türkiye | 2016 | 26.630   |
| Ministry of Education Al Ares Alef Project                    | KSA     | 2017 | 595      | Sivas Votorantim Cement Facility                      | Türkiye | 2016 | 11.857   |
| Ministry of Education Al Taj Dmor Gandel Samer Alef Project   | KSA     | 2017 | 696      | Adam Airbase Sports Hall & Swimming Pool              | Oman    | 2016 | 3.655    |
| Ministry of Education Darag Company Sabia Project             | KSA     | 2017 | 1.422    | Adco New Masjid Project                               | UAE     | 2016 | 1.460    |
| Ministry of Education Depo Sad Project                        | KSA     | 2017 | 1.392    | Afşin Bazaar Area                                     | Türkiye | 2016 | 3.437    |
| Ministry of Education Dorat Alhelalia Sad Project             | KSA     | 2017 | 696      | Al Jaleeb Al Shuwaikh Youth Sports Center             | Kuwait  | 2016 | 4.162    |
| Ministry of Education Emar Albaseta Alef-1 & 2 Projects       | KSA     | 2017 | 1.364    | Araymond Production Facility                          | Türkiye | 2016 | 2.353    |
| Ministry of Education Hasan Awgheel Project                   | KSA     | 2017 | 682      | Arimeks Canopy  | Türkiye | 2016 | 1.171    |
| Ministry of Education Khalid Stuck Alef-1,2,3,4 Projects      | KSA     | 2017 | 1.364    | Citroen Showroom Project                              | Türkiye | 2016 | 1.791    |
| Ministry of Education Malkiya Girls Primary Project           | Bahrein | 2017 | 860      | Compost Facility                                      | Türkiye | 2016 | 2.240    |
| Ministry of Education Mazaia Alef Project                     | KSA     | 2017 | 682      | Cordoba Boulevard Riyadh Project                      | KSA     | 2016 | 9.547    |



# ALTINYALDIZ®

Uluslararası Uzay Sistem Konstrüksiyonları Sanayi ve Ticaret Anonim Şirketi  
International Space Frame Construction Industry and Commerce Joint Stock Co.

## References

| Project Name  | Country   | Year | Area -M <sup>2</sup> | Project Name   | Country | Year | Area -M <sup>2</sup> |
|---|-----------|------|----------------------|--|---------|------|----------------------|
| Çağrı Gıda Arnavutköy Warehouse                           | Türkiye   | 2016 | 6.578                | Ministry of Education Moaz Bin Gabl Taj Alef Project     | KSA     | 2016 | 682                  |
| Doğ Kennel Project  | Oman      | 2016 | 1.059                | Ministry of Education Naif Sokhor Alef Project           | KSA     | 2016 | 682                  |
| Durden Plastic Plant                                      | Türkiye   | 2016 | 8.117                | Ministry of Education Qura Taj Alef Project              | KSA     | 2016 | 682                  |
| Ecological Energy Facility                                | Türkiye   | 2016 | 4.702                | Ministry of Education Wafa Sokhor Alef Project           | KSA     | 2016 | 682                  |
| Galala Shopping Mall & Ice skating Ring Project           | Egypt     | 2016 | 7.078                | Najaf Airport Extension Project 1                        | Iraq    | 2016 | 8.635                |
| İmes Datakom Building                                     | Türkiye   | 2016 | 4.774                | Paşabahçe Plant  | Türkiye | 2016 | 25.025               |
| İskenderun Port Exit Canopy                               | Türkiye   | 2016 | 411                  | Plant Roof - Gebze                                       | Türkiye | 2016 | 3.402                |
| İstanbul Ticaret Storage                                  | Türkiye   | 2016 | 14.385               | Sarıtaş Gebze Plant                                      | Türkiye | 2016 | 3.864                |
| Köfteci Yusuf Restaurant                                  | Türkiye   | 2016 | 1.259                | Schotti Orim Glass Plant                                 | Türkiye | 2016 | 4.765                |
| Kromberg Bitola Plant Expansion Project                   | Macedonia | 2016 | 21.709               | Storage Facility Project                                 | Türkiye | 2016 | 3.145                |
| Madinat Isa Primary School Project                        | Bahrein   | 2016 | 860                  | Transfer Facility Project                                | Türkiye | 2016 | 4.569                |
| Marmara Metal A.Ş. Mm3 Building                           | Türkiye   | 2016 | 12.676               | Tulip Metal Gebze Osb Facility                           | Türkiye | 2016 | 1.610                |
| Middleeast University Project                             | Oman      | 2016 | 2.195                | Tuzla Orhanlı Logistics Warehouse                        | Türkiye | 2016 | 9.384                |
| Ministry of Education Aby Ayoub 01 & 02-Taj Sad Projects  | KSA       | 2016 | 1.392                | Tuzla Plant  | Türkiye | 2016 | 3.984                |
| Ministry of Education Al Algial Sokhor Alef Project       | KSA       | 2016 | 682                  | Türk Demir Döküm Fabrikaları Bozüyük Canopy              | Türkiye | 2016 | 689                  |
| Ministry of Education Al Dhery Alef Project               | KSA       | 2016 | 682                  | Uyguner Deri Tuzla Plant                                 | Türkiye | 2016 | 2.909                |
| Ministry of Education Al Fares –Gernata Alef Project      | KSA       | 2016 | 682                  | Vesmec Warehouse   | Türkiye | 2016 | 5.889                |
| Ministry of Education Al Obid Malek Al Riyadh Project     | KSA       | 2016 | 645                  | Warehouse - Nicosia                                      | Cyprus  | 2016 | 3.408                |
| Ministry of Education Al Raghy Mehwaral Eqte Sad Project  | KSA       | 2016 | 696                  | Malta MCM- MRO Plane Hangars                             | Malta   | 2015 | 3.445                |
| Ministry of Education Al Rahma Old Small Internal Project | KSA       | 2016 | 682                  | Malta MCM Maintenance Plane Hangar                       | Malta   | 2015 | 6.396                |
| Ministry of Education Al Roia Gazan Aldaia Sad Project    | KSA       | 2016 | 696                  | City Enterence Gate Project                              | KSA     | 2015 | 646                  |
| Ministry of Education Alzobir Beshia Projects             | KSA       | 2016 | 1.066                | Fast Food Restaurant Male & Female Restaurant Project    | Kuwait  | 2015 | 2.611                |
| Ministry of Education Babten Alsafa Gazan City Project    | KSA       | 2016 | 682                  | King Saud University Sports hall & Faculty               | KSA     | 2015 | 3912                 |
| Ministry of Education Ben Atshan Alef Project             | KSA       | 2016 | 682                  | Ministry Of Awqaf & Islamic Affairs Head                 | Qatar   | 2015 | 596                  |
| Ministry of Education Dal New Version Kriza Project       | KSA       | 2016 | 1.322                | Ministry of Education Aiziya Riyadh Alef Project         | KSA     | 2015 | 682                  |
| Ministry of Education Darsony Hael Altoufel Sad Project   | KSA       | 2016 | 696                  | Ministry of Education Al Asamlaa Sad New Version Project | KSA     | 2015 | 988                  |
| Ministry of Education Darsony Hael Mamika Sad Project     | KSA       | 2016 | 696                  | Ministry of Education Al Azm Al Ridh Sad Project         | KSA     | 2015 | 696                  |
| Ministry of Education Darsony Hael Masiaf Sad Project     | KSA       | 2016 | 696                  | Ministry of Education Al Baian Ibn Obada Alef Project    | KSA     | 2015 | 682                  |
| Ministry of Education Darsony Hael Shefaa Sad Project     | KSA       | 2016 | 696                  | Ministry of Education Al Darsony Hael City Alef Project  | KSA     | 2015 | 682                  |
| Ministry of Education Ekli Company Elnamas Project        | KSA       | 2016 | 934                  | Ministry of Education Al Farez – Al Hzm-1&2 Projects     | KSA     | 2015 | 1.271                |





# ALTINYALDIZ®

Uluslararası Uzak Sistem Konstrüksiyonları Sanayi ve Ticaret Anonim Şirketi  
International Space Frame Construction Industry and Commerce Joint Stock Co.

## References

| Project Name  | Country | Year | Area -M <sup>2</sup> | Project Name   | Country    | Year | Area -M <sup>2</sup> |
|---|---------|------|----------------------|--|------------|------|----------------------|
| Ministry of Education Al Ghaznawy Alef Project              | KSA     | 2015 | 682                  | Ministry of Education Maalem Al Sondwa Sad Project       | KSA        | 2015 | 892                  |
| Ministry of Education Al Namas Al Ola Alef Project          | KSA     | 2015 | 682                  | Ministry of Education Motawsta Ola Project               | KSA        | 2015 | 682                  |
| Ministry of Education Al Salama Origaa Sad Project          | KSA     | 2015 | 696                  | Ministry of Education Rafha Altaj Rafha City Project     | KSA        | 2015 | 696                  |
| Ministry of Education Al Sokhor Al Golibat Project          | KSA     | 2015 | 682                  | Ministry of Education Sad Gada Project                   | KSA        | 2015 | 883                  |
| Ministry of Education Al Sokhor Al Homidan Projects         | KSA     | 2015 | 1.364                | Ministry of Education Sahel Holi Project                 | KSA        | 2015 | 682                  |
| Ministry of Education Al Sokhor Al Shakeka 1 & 2 Projects   | KSA     | 2015 | 787                  | Ministry of Education Salman Kharj Sad Project           | KSA        | 2015 | 696                  |
| Ministry of Education Al Watan Sad & Al Watan Projects      | KSA     | 2015 | 997                  | Ministry of Education Saud Alfadhil Sad Project          | KSA        | 2015 | 696                  |
| Ministry of Education Alaamal Altatweriah Projects          | KSA     | 2015 | 1.001                | Ministry of Education Saudia Basira Majmaah Sad Project  | KSA        | 2015 | 696                  |
| Ministry of Education Almahasna Project                     | KSA     | 2015 | 682                  | Ministry of Education Second Primary Dalam Sad Project   | KSA        | 2015 | 696                  |
| Ministry of Education Alzahy Sad & Alzahy New Project       | KSA     | 2015 | 892                  | Ministry of Education Sehemia 37 Sad Project             | KSA        | 2015 | 696                  |
| Ministry of Education Badr Al Quae Sad Project              | KSA     | 2015 | 696                  | Ministry of Education Sibikha Tathlith Bisha Project     | KSA        | 2015 | 993                  |
| Ministry of Education Badr Al Quae Al Sokour Project        | KSA     | 2015 | 696                  | Ministry of Education Sofyan Rokhayman Bisha Sad Project | KSA        | 2015 | 696                  |
| Ministry of Education Badr Al Quae Hasan Ibn Project        | KSA     | 2015 | 1.392                | Ministry of Education Sultan Alfadhil Sad Project        | KSA        | 2015 | 696                  |
| Ministry of Education Badr Al Quae Sad Project              | KSA     | 2015 | 696                  | Ministry of Education Tahfeez Khaybar Bisha Sad Project  | KSA        | 2015 | 696                  |
| Ministry of Education Basira Majmaah Sad Project            | KSA     | 2015 | 696                  | Ministry of Education Tarik Ibn Ziad Albabteen           | KSA        | 2015 | 682                  |
| Ministry of Education Bdr Sala Project                      | KSA     | 2015 | 675                  | Ministry of Education Tashyeed Faisal Sad New Project    | KSA        | 2015 | 988                  |
| Ministry of Education Bena Al Gazera Alef Project           | KSA     | 2015 | 682                  | Ministry of Education Tishan Bashir School Alef Project  | KSA        | 2015 | 682                  |
| Ministry of Education Berniat Arbia Alef & Internal Project | KSA     | 2015 | 2.634                | Ministry of Education Wadi Qusay Jazan External Project  | KSA        | 2015 | 988                  |
| Ministry of Education Dal New Version Doussary Project      | KSA     | 2015 | 1.287                | Ministry of Education Zahwan Internal & External Project | KSA        | 2015 | 758                  |
| Ministry of Education Dal New Version Sama Dour Project     | KSA     | 2015 | 1.635                | Baghdad Airport Kerbala Hall                             | Iraq       | 2014 | 1.606                |
| Ministry of Education Darsony Al Ragab Project              | KSA     | 2015 | 1.784                | Esenyurt Karagöz Warehouse                               | Türkiye    | 2014 | 9.978                |
| Ministry of Education Darsony Ghzala Sad Project            | KSA     | 2015 | 696                  | Adel Kalemçilik-Access Control Building                  | Türkiye    | 2014 | 2.393                |
| Ministry of Education Dayin-57 Aja Hail Sad Project         | KSA     | 2015 | 696                  | Al Qua Station Al Ain Space Frame Project                | UAE        | 2014 | 1.737                |
| Ministry of Education Ebad Khahtany Dal Project             | KSA     | 2015 | 1.422                | Azerbaijan Car Showroom                                  | Azerbaijan | 2014 | 1.248                |
| Ministry of Education External Sports Hall-Rossow Projects  | KSA     | 2015 | 1.536                | Dewan Umm Al Qawin Project                               | UAE        | 2014 | 3.703                |
| Ministry of Education Fadel-Ibn Alqaim Project              | KSA     | 2015 | 696                  | Ensa Alüminyum Logistics Buildings                       | Türkiye    | 2014 | 4.100                |
| Ministry of Education Ibn Shebab Al Fares Project           | KSA     | 2015 | 682                  | Girne Port Custom Roof                                   | Cyprus     | 2014 | 750                  |
| Ministry of Education Isihla Tathlith Bisha Sad Project     | KSA     | 2015 | 696                  | Housing Authority Secondary School Project               | Kuwait     | 2014 | 1.240                |
| Ministry of Education Joulaybat Bisha Project               | KSA     | 2015 | 696                  | Housing Authority Primary School Project                 | Kuwait     | 2014 | 2.920                |
| Ministry of Education Khandak Bisha Sad Project             | KSA     | 2015 | 696                  | Jahra And Farwania Courthouse                            | Kuwait     | 2014 | 860                  |



# ALTINYALDIZ®

Uluslararası Uçay Sistem Konstrüksiyonları Sanayi ve Ticaret Anonim Şirketi  
International Space Frame Construction Industry and Commerce Joint Stock Co.

## References

| Project Name  | Country | Year | Area -M <sup>2</sup> | Project Name   | Country | Year | Area -M <sup>2</sup> |
|---|---------|------|----------------------|--|---------|------|----------------------|
| Marmara Metal Facility                                    | Türkiye | 2014 | 14.636               | Ministry of Education Mitri Artawiya Tat Project         | KSA     | 2014 | 696                  |
| Metaş Warehouse   | Türkiye | 2014 | 11.073               | Ministry of Education Mjirma Tat Project                 | KSA     | 2014 | 696                  |
| Milaf Sad & Milaf New Internal Project                    | KSA     | 2014 | 892                  | Ministry of Education Mohdatha Raha Sad Project          | KSA     | 2014 | 988                  |
| Ministry of Education Al Azizia Bbt Project               | KSA     | 2014 | 690                  | Ministry of Education Mohdatha Tat & Murat Tat Project   | KSA     | 2014 | 1.400                |
| Ministry of Education Al Babten Mazhra Gazen Alef         | KSA     | 2014 | 1.066                | Ministry of Education Mohdsa Zahret Nemar Project        | KSA     | 2014 | 2.784                |
| Ministry of Education Al Dien Sad Project                 | KSA     | 2014 | 696                  | Ministry of Education Nawan Project                      | KSA     | 2014 | 900                  |
| Ministry of Education Al Ghadir Bbt Project               | KSA     | 2014 | 690                  | Ministry of Education New Design Alef Project            | KSA     | 2014 | 673                  |
| Ministry of Education Al Haddar Bbt Project               | KSA     | 2014 | 690                  | Ministry of Education Obada Tat Project                  | KSA     | 2014 | 696                  |
| Ministry of Education Al-Ameen Pre-school building        | KSA     | 2014 | 696                  | Ministry of Education Omm Oura Tat Project               | KSA     | 2014 | 696                  |
| Ministry of Education Alef New Version Project            | KSA     | 2014 | 594                  | Ministry of Education Osos Internal & External Project   | KSA     | 2014 | 790                  |
| Ministry of Education Alkhozama-Bbt Project               | KSA     | 2014 | 690                  | Ministry of Education Rashed Zahrewy Qassem City         | KSA     | 2014 | 2.088                |
| Ministry of Education Alwouroud Educat Sad Project        | KSA     | 2014 | 690                  | Ministry of Education Rashid Tat Project                 | KSA     | 2014 | 696                  |
| Ministry of Education Ariaf Malik Abdallah Tat Project    | KSA     | 2014 | 696                  | Ministry of Education Ruwaida Arifi Sad Project          | KSA     | 2014 | 700                  |
| Ministry of Education Assim Sad Project                   | KSA     | 2014 | 700                  | Ministry of Education Salem Alkhahtan Project            | KSA     | 2014 | 1.364                |
| Ministry of Education Chaffan Zarib Tat Bin Zarib Project | KSA     | 2014 | 696                  | Ministry of Education Shahrani Sad Project               | KSA     | 2014 | 696                  |
| Ministry of Education Gharaf Interm Project               | KSA     | 2014 | 720                  | Ministry of Education Tahfeez Huzaim Alef Project        | KSA     | 2014 | 682                  |
| Ministry of Education Ghat University Project             | KSA     | 2014 | 670                  | Ministry of Education Taj Gar Compound Tat Project       | KSA     | 2014 | 696                  |
| Ministry of Education Hadija - Bbt                        | KSA     | 2014 | 682                  | Ministry of Education Taj Maamoun Madinah Alef           | KSA     | 2014 | 682                  |
| Ministry of Education Hamarayn Bbt Project                | KSA     | 2014 | 690                  | Ministry of Education Taj Qurayat Sad Project            | KSA     | 2014 | 696                  |
| Ministry of Education Hay Hauda Tat Project               | KSA     | 2014 | 696                  | Ministry of Education Tamir Sec Bbt Project              | KSA     | 2014 | 690                  |
| Ministry of Education Hayaniya Tat Project                | KSA     | 2014 | 696                  | Ministry of Education Wabran Dosh Primary Sabya          | KSA     | 2014 | 696                  |
| Ministry of Education Ibn Hajib Bbt Project               | KSA     | 2014 | 682                  | Ministry of Education Wabran Dosh Secondary Project      | KSA     | 2014 | 696                  |
| Ministry of Education Ibn Qaab Bbt Project                | KSA     | 2014 | 690                  | Ministry of Education Wabran Jaradiya Samta Alef Project | KSA     | 2014 | 682                  |
| Ministry of Education Ilmi College Fad Project            | KSA     | 2014 | 1.060                | Ministry of Education Yamama Tat Project                 | KSA     | 2014 | 696                  |
| Ministry of Education Iskan-1 & 2 Tat Projects            | KSA     | 2014 | 1.392                | Modern Karton - Plant                                    | Türkiye | 2014 | 4.886                |
| Ministry of Education Issawiya Qurayat Sad Project        | KSA     | 2014 | 696                  | Mogadishu Airport  | Somali  | 2014 | 11.520               |
| Ministry of Education Khasiba Bbt Project                 | KSA     | 2014 | 690                  | Nigeria Ikot Ekpene Hotel Project Ball Room              | Nigeria | 2014 | 639                  |
| Ministry of Education Khaybar Chahrany Project            | KSA     | 2014 | 696                  | Ordu Sagra Plant   | Türkiye | 2014 | 95                   |
| Ministry of Education Malik Fahad Sad Project             | KSA     | 2014 | 700                  | Plant Roof   | Algeria | 2014 | 2.250                |
| Ministry of Education Milaf Tahfeez Tat Project           | KSA     | 2014 | 696                  | Private Security Force Apartments                        | Türkiye | 2014 | 1.825                |





# ALTINYALDIZ®

Uluslararası Uçay Sistem Konstrüksiyonları Sanayi ve Ticaret Anonim Şirketi  
International Space Frame Construction Industry and Commerce Joint Stock Co.

## References

| Project Name   | Country | Year | Area -M² | Project Name  | Country | Year | Area -M² |
|--|---------|------|----------|---|---------|------|----------|
| Ras Al Khaimah & Sharjah Emirates National Project   | UAE     | 2014 | 1.346    | Kasımpaşa Sports Hall                                     | Türkiye | 2013 | 2.240    |
| Tawar Shopping Mall                                  | Qatar   | 2014 | 1.662    | Kırklareli Paşabahçe Storage                              | Türkiye | 2013 | 941      |
| Ted Adana College Sports Hall                        | Türkiye | 2014 | 1.030    | Kimyapsan Kimya Plant - Gebze                             | Türkiye | 2013 | 2.072    |
| Uts/İmes Factory Building                            | Türkiye | 2014 | 2.985    | Kömürcüoda Biological Drying Facility 2                   | Türkiye | 2013 | 4.110    |
| Warehouse  | Türkiye | 2014 | 2.260    | Köseköy Warehouse Building                                | Türkiye | 2013 | 1.438    |
| Yelkenli Girls High School                           | Bahrein | 2014 | 907      | Ministry of Education Al Arqam Primary School             | KSA     | 2013 | 690      |
| Adana Sönmez Cement Storages                         | Türkiye | 2013 | 44.271   | Ministry of Education Al Azizah Fire Bridgade             | KSA     | 2013 | 800      |
| Yenişehir Şişecam Project                            | Türkiye | 2013 | 7.815    | Ministry of Education Al Maymoon & Shoorra School Project | KSA     | 2013 | 1.240    |
| Aunde Plant Building                                 | Türkiye | 2013 | 3.250    | Ministry of Education Al Nabqaya (Bbt) Primary School     | KSA     | 2013 | 690      |
| Unika Kablo Çerçevköy Facility Extension             | Türkiye | 2013 | 2.484    | Ministry of Education Al Rashwa School Project            | KSA     | 2013 | 690      |
| King Saud University Stadium                         | KSA     | 2013 | 12.000   | Ministry of Education Bbt Project -2                      | KSA     | 2013 | 690      |
| Agricultural Storages                                | Türkiye | 2013 | 9.932    | Ministry of Education Daghareer Secondary School          | KSA     | 2013 | 1.075    |
| Akkim Warehouse Building                             | Georgia | 2013 | 1.130    | Ministry of Education Faisal Bin Turkey Project           | KSA     | 2013 | 700      |
| Al Yasat School Project                              | UAE     | 2013 | 1.600    | Ministry of Education Gharra School Project               | KSA     | 2013 | 690      |
| Anadolu Motor Plant                                  | Türkiye | 2013 | 9.781    | Ministry of Education Guaamra School Project              | KSA     | 2013 | 690      |
| Beyarmudu Conference Hall                            | KSA     | 2013 | 1.360    | Ministry of Education Hamza Bin Habib Alkoufi Project     | KSA     | 2013 | 700      |
| BİM - Afyon Warehouse                                | Türkiye | 2013 | 13.738   | Ministry of Education Hay Anadhim Project                 | KSA     | 2013 | 1.090    |
| Çorlu Plant  | Türkiye | 2013 | 3.148    | Ministry of Education Ibn Majaa Project                   | KSA     | 2013 | 940      |
| Dışan Plant  | Türkiye | 2013 | 1.610    | Ministry of Education Incha Sala Project                  | KSA     | 2013 | 700      |
| Diyarbakır Teacher's Lodge                           | Türkiye | 2013 | 720      | Ministry of Education Kharja Bin Zayd Project             | KSA     | 2013 | 700      |
| El Eida Headquarter Building                         | UAE     | 2013 | 4.000    | Ministry of Education Mikdad Bin Omar Project             | KSA     | 2013 | 900      |
| Esenyurt Plant                                       | Türkiye | 2013 | 1.463    | Ministry of Education Nasbaa School Project               | KSA     | 2013 | 1.430    |
| Fenerbahçe College Mevlana Sports Hall               | Türkiye | 2013 | 1.077    | Ministry of Education Qadisiyya Dawadmy Project           | KSA     | 2013 | 900      |
| Gaziantep Exhibition Center Extension                | Türkiye | 2013 | 16.000   | Ministry of Education Suhail Bin Amrou Project            | KSA     | 2013 | 700      |
| Housing Authority Secondary School Project           | Kuwait  | 2013 | 3.120    | Ministry of Education Tahfeeth Quran Malik Fahad          | KSA     | 2013 | 1.070    |
| İmes Plant Project                                   | Türkiye | 2013 | 1.932    | Ministry of Education Tahfeeth Alquraan In Dulam          | KSA     | 2013 | 940      |
| İzdemir Enerji Coal Storage                          | Türkiye | 2013 | 15.759   | Ministry of Education Walee Aahd Project                  | KSA     | 2013 | 940      |
| İzmir Adnan Menderes Airport Concave and Curved Roof | Türkiye | 2013 | 4.969    | Ministry of Education Yazid Bin Harith Project            | KSA     | 2013 | 1.860    |
| K.Maraş Kipaş Paper Plant Canopies                   | Türkiye | 2013 | 7.820    | Mnya Hotel Resort Complex                                 | Ukraine | 2013 | 1.350    |
| Karatay Congress Hall                                | Türkiye | 2013 | 2.740    | Plant - Tuzla   | Türkiye | 2013 | 3.080    |



# ALTINYALDIZ®

Uluslararası Uzay Sistem Konstrüksiyonları Sanayi ve Ticaret Anonim Şirketi  
International Space Frame Construction Industry and Commerce Joint Stock Co.

## References

| Project Name                               | Country | Year | Area -M <sup>2</sup> | Project Name  | Country      | Year | Area -M <sup>2</sup> |
|--|---------|------|----------------------|---|--------------|------|----------------------|
| Plastic Factory & Warehouse - Kırşehir     | Türkiye | 2013 | 2.597                | Konya Congress Hall                                 | Türkiye      | 2012 | 900                  |
| Politem Plastik Warehouse Building         | Türkiye | 2013 | 3.228                | Kömürcüoda Biological Drying Facility I             | Türkiye      | 2012 | 9.040                |
| Qa Senior School- Skylight Project         | Qatar   | 2013 | 450                  | Kromberg Plant Project                              | Macedonia    | 2012 | 18.074               |
| Ramazanoğlu Lojistik Warehouse             | Türkiye | 2013 | 6.640                | Mekez Boys School Yard                              | KSA          | 2012 | 660                  |
| Scattolini Production Facility             | Türkiye | 2013 | 9.306                | Niğde North Link Road Toll Booth Roof               | Türkiye      | 2012 | 453                  |
| Setif Park Shopping Mall                   | Algeria | 2013 | 2.730                | Plas Plastik Gosb Product Warehouse                 | Türkiye      | 2012 | 3.099                |
| Sio Automotive Plant                       | Türkiye | 2013 | 9.437                | Qapco Club - Al Reem Club                           | Qatar        | 2012 | 3.500                |
| Susa Warehouses                            | Türkiye | 2013 | 3.350                | Refining Plant                                      | Cyprus       | 2012 | 678                  |
| Umm Al Qura University Classrooms          | KSA     | 2013 | 2.430                | Sinop Erfelek Municipal Water Treatment Facility    | Türkiye      | 2012 | 855                  |
| Unilever Canopy - Gebze                    | Türkiye | 2013 | 281                  | Sports Hall for Ministry of Education               | Kuwait       | 2012 | 700                  |
| Warehouse Building                         | Türkiye | 2013 | 4.045                | Tabuk Airport - Enterence Gate                      | KSA          | 2012 | 1.100                |
| Gubkinsky Sports Hall                      | Russia  | 2012 | 1.408                | Trakya Cam Mersin Plant                             | Türkiye      | 2012 | 6.484                |
| Çekmeköy Sports Kompleks                   | Türkiye | 2012 | 3.214                | Warehouse Building - Kocaeli                        | Türkiye      | 2012 | 4.074                |
| Sulphur Gas Handling Terminal- Habshan     | UAE     | 2012 | 48.500               | Wedding Hall Roof                                   | KSA          | 2012 | 1.280                |
| Sulphur Gas Handling Terminal- Ruwais      | UAE     | 2012 | 96.000               | Kerbala Truck Garage Project                        | Iraq         | 2011 | 18.904               |
| Ajman School Building                      | UAE     | 2012 | 4.490                | Çanakkale Akçansa Cement Plant Canopy               | Türkiye      | 2011 | 2.038                |
| Al Helalia Project                         | KSA     | 2012 | 1.443                | Türkmenbashi Hippodrome ( Circus, Tribune, Paddock) | Turkmenistan | 2011 | 11.973               |
| Al Qasim School Project                    | KSA     | 2012 | 1.056                | Al Adabia Port -Truck Enterence Canopy              | Egypt        | 2011 | 680                  |
| Al Surra Dome Project                      | Kuwait  | 2012 | 487                  | Atatürk International Airport Mosque                | Türkiye      | 2011 | 735                  |
| Antalya Dış Hatlar Terminal Extension      | Türkiye | 2012 | 802                  | Atay Makina Plant                                   | Türkiye      | 2011 | 5.172                |
| Bbt Project                                | KSA     | 2012 | 690                  | Bodrum Acıbadem Hospital                            | Türkiye      | 2011 | 533                  |
| BİM - Torbalı-Izmir Warehouse              | Türkiye | 2012 | 14.516               | Bolu Market Place                                   | Türkiye      | 2011 | 1.520                |
| Dempaş Warehouse Building                  | Türkiye | 2012 | 5.407                | El Fateh Port Project                               | Egypt        | 2011 | 14.500               |
| Dubai Aircraft Hangar                      | UAE     | 2012 | 6.800                | Emirates International School                       | UAE          | 2011 | 1.350                |
| Esenboğa Airport Mosque                    | Türkiye | 2012 | 1.393                | Eskişehir Şişecam Plastics Warehouse                | Türkiye      | 2011 | 2.505                |
| Gebze Heavy Oil Plant                      | Türkiye | 2012 | 3.094                | Fenerbahçe Metro Energy Sports Hall                 | Türkiye      | 2011 | 1.419                |
| Hakkari Yüksekova Airport                  | Türkiye | 2012 | 250                  | Fountain Plaza                                      | Qatar        | 2011 | 590                  |
| Housing Authority Secondary School Project | Kuwait  | 2012 | 1.822                | Garage Projects                                     | Türkiye      | 2011 | 18.905               |
| King Abdulaziz University - Congress Hall  | KSA     | 2012 | 752                  | Gebze City Square Multipurpose Hall                 | Türkiye      | 2011 | 465                  |
| Kocaeli University Canopy                  | Türkiye | 2012 | 250                  | Highways Area Site Enterence Building - 17          | Türkiye      | 2011 | 180                  |



# ALTINYALDIZ®

Uluslararası Uzay Sistem Konstrüksiyonları Sanayi ve Ticaret Anonim Şirketi  
International Space Frame Construction Industry and Commerce Joint Stock Co.

## References

| Project Name                            | Country      | Year | Area -M² | Project Name                                       | Country      | Year | Area -M² |
|---|--------------|------|----------|--|--------------|------|----------|
| Hyundai Showroom                        | Egypt        | 2011 | 2.300    | Kıraç Warehouse Building                           | Türkiye      | 2010 | 21.800   |
| Kemet Plant                             | Macedonia    | 2011 | 8.820    | King Abdulaziz Airport - Haj Terminal              | KSA          | 2010 | 2.100    |
| Melez Deresi Pedetrian Bridge           | Türkiye      | 2011 | 250      | King Saud Bin Abdulaziz University Medical Faculty | KSA          | 2010 | 250      |
| Najaf Cultural Center                   | Iraq         | 2011 | 6.670    | Kocaeli University Swimming Pool                   | Türkiye      | 2010 | 1.640    |
| Nuveyba Port                            | Egypt        | 2011 | 16.000   | Loading Area Canopy                                | Türkiye      | 2010 | 624      |
| Plant Canopy                            | Türkiye      | 2011 | 1.960    | Metal Tech Factory - King Khalid Airport           | KSA          | 2010 | 1.500    |
| Plant Canopy                            | Türkiye      | 2011 | 1.038    | Migros Logistic Center                             | Türkiye      | 2010 | 18.041   |
| Plant Roof                              | Türkiye      | 2011 | 823      | Military Sheds                                     | Türkiye      | 2010 | 2.364    |
| Plants Canopies                         | Türkiye      | 2011 | 8.500    | Ministry of Tourism - Headqurter                   | Oman         | 2010 | 562      |
| Printing Factory                        | Qatar        | 2011 | 1.848    | Murat Dede Plant Building                          | Türkiye      | 2010 | 1.604    |
| Salmiya Theatre Hall                    | Kuwait       | 2011 | 620      | Ohrid Skopje Civilian Airport                      | Macedonia    | 2010 | 25.000   |
| Şişecam Kırklareli Building             | Türkiye      | 2011 | 14.497   | Open Bazaar Canopy                                 | Türkiye      | 2010 | 500      |
| Tolga Bayraktar Plant                   | Türkiye      | 2011 | 1.610    | Plant Canopy - Çatalca                             | Türkiye      | 2010 | 341      |
| Trakya Otocam Plant                     | Türkiye      | 2011 | 5.363    | Plastic Factory Extension                          | Türkiye      | 2010 | 4.700    |
| Tuzla Plant                             | Türkiye      | 2011 | 5.433    | Private Security Force Building                    | UAE          | 2010 | 1.400    |
| Warehouse Building                      | Türkiye      | 2011 | 2.142    | PVC Pipe Plant Canopy and Dining Hall              | Türkiye      | 2010 | 3.300    |
| Warehouse Building                      | Türkiye      | 2011 | 1.861    | Sabiha Gökçen Airport Trijeneration Building       | Türkiye      | 2010 | 1.000    |
| Shipyards - Turkmenbashi                | Turkmenistan | 2010 | 3.578    | Silhouette Tower, Swimming Pool                    | Qatar        | 2010 | 250      |
| Akbank Abm Building                     | Türkiye      | 2010 | 689      | Swimming Pool and Terrace Project                  | Türkiye      | 2010 | 1.035    |
| Al Abbas Plant                          | Iraq         | 2010 | 6.000    | Şişecam Trakya Cam Storage Building                | Türkiye      | 2010 | 969      |
| Al Jawahiri Sports Hall                 | UAE          | 2010 | 2.740    | Umm Al Qura University                             | KSA          | 2010 | 650      |
| Areva, Gebze                            | Türkiye      | 2010 | 18.300   | Umm Al Qura University                             | KSA          | 2010 | 190      |
| BM Makine Plant                         | Türkiye      | 2010 | 1.904    | Umm Al Qura University Maintenance Shop            | KSA          | 2010 | 3.200    |
| Diyarbakır Sports Hall                  | Türkiye      | 2010 | 7.267    | Warehouse building - Dilovası                      | Türkiye      | 2010 | 3.595    |
| Dry Cargo Port and Shipyards Project    | Oman         | 2010 | 1.400    | Warehouse Building - Trabzon Port                  | Türkiye      | 2010 | 3.331    |
| Fenerbahçe College Sports Hall          | Türkiye      | 2010 | 1.134    | Wedding Hall Roof - Adnec                          | UAE          | 2010 | 3.200    |
| Gersan Çaycuma Plant                    | Türkiye      | 2010 | 12.800   | Zayed Military Camp                                | UAE          | 2010 | 236      |
| Hotel Swimming Pool                     | Türkiye      | 2010 | 1.000    | Plant Roof - Ethiopia                              | Ethiopia     | 2009 | 32.286   |
| Kaan Davut Plant                        | Türkiye      | 2010 | 1.373    | Turkmenistan Airport Enterence                     | Turkmenistan | 2009 | 485      |
| Kampala Hilton, Roof and Enterence Dome | Uganda       | 2010 | 1.200    | Turkmenistan Airport Otopark and Cargo Hangar      | Turkmenistan | 2009 | 9.621    |





# ALTINYALDIZ®

Uluslararası Uzay Sistem Konstrüksiyonları Sanayi ve Ticaret Anonim Şirketi  
International Space Frame Construction Industry and Commerce Joint Stock Co.

## References

| Project Name  | Country    | Year | Area -M² | Project Name                            | Country | Year | Area -M² |
|---|------------|------|----------|---|---------|------|----------|
| Al Fateh University Sports Faculty Building         | Libya      | 2009 | 4.000    | Fish Market Place                       | Oman    | 2008 | 2.750    |
| Al Rakkah Space Frame Project                       | Syria      | 2009 | 2.430    | Gas Station                             | Türkiye | 2008 | 1.400    |
| Al Shabab Stadium, Ahmady                           | Kuwait     | 2009 | 3.330    | Ghareb Moaizer Girls Training School    | Qatar   | 2008 | 2.050    |
| Ali Al Ghanim Sports Halls                          | Kuwait     | 2009 | 12.000   | Izzet-Nedim Zavaro Plant                | Türkiye | 2008 | 1.600    |
| Bank Muscat Headquarter Building                    | Oman       | 2009 | 1.500    | Mwr Sports Hall 314 & 315               | UAE     | 2008 | 1.300    |
| Basf Storage Facility                               | Türkiye    | 2009 | 2.600    | Nizwa Sports Hall                       | Oman    | 2008 | 1.900    |
| Brook Showroom                                      | Türkiye    | 2009 | 3.710    | Ostrovit Wine Production Facility       | Romania | 2008 | 1.250    |
| Darwaza Skylight Construction                       | Kuwait     | 2009 | 950      | Palladium Shopping Mall Dome            | Türkiye | 2008 | 1.000    |
| Dubai School Project                                | UAE        | 2009 | 9.550    | Park Press Printing Facilities          | Türkiye | 2008 | 19.300   |
| Egypt Army Stadium                                  | Egypt      | 2009 | 350      | Plant Roof                              | Türkiye | 2008 | 1.100    |
| Harbiye Congress Hall                               | Türkiye    | 2009 | 6.500    | SGK Helicopter Shed                     | Türkiye | 2008 | 1.300    |
| Hür Plastik Plant                                   | Türkiye    | 2009 | 3.700    | Sheraton Hotel Lobby Bar ve Ballroom    | Türkiye | 2008 | 1.150    |
| Izmit Ice Hockey Arena                              | Russia     | 2009 | 3.940    | Starcity Shopping Mall                  | Türkiye | 2008 | 4.000    |
| King Abdulaziz International Airport Complex        | KSA        | 2009 | 9.200    | Storage Building                        | Türkiye | 2008 | 10.500   |
| Lead - Zinc Flotation Facility                      | Türkiye    | 2009 | 5.500    | Şişecam Eskişehir Warehouse             | Türkiye | 2008 | 11.425   |
| Swimming Pool and Ice Hockey Arena                  | Russia     | 2009 | 8.960    | Tekira Shopping Mall                    | Türkiye | 2008 | 4.100    |
| Warehouse and Canopy                                | Türkiye    | 2009 | 3.360    | Trakya Cam San. Otocam Extension        | Türkiye | 2008 | 2.054    |
| Warehouse Building                                  | Türkiye    | 2009 | 12.000   | Umm Al Qura University                  | KSA     | 2008 | 8.070    |
| Şişecam Camişiş Bobin Warehouse Building            | Türkiye    | 2008 | 6.140    | Umm Qarn Multipurpose Hall              | Qatar   | 2008 | 1.220    |
| Amasra Sahil Güvenlik Komutanlığı-Helicopter Hangar | Türkiye    | 2008 | 650      | UTS Factory Building                    | Türkiye | 2008 | 1.750    |
| Almaty Finance Center                               | Kazakhstan | 2008 | 3.888    | Bottle Factory Warehouse Buildings      | Türkiye | 2007 | 18.544   |
| Afyon Commercial Exchange                           | Türkiye    | 2008 | 1.912    | Khanty Mansiysk University Sports Hall  | Russia  | 2007 | 867      |
| Al Raha Gardens English Schools                     | UAE        | 2008 | 1.750    | Domodedovo Shopping Mall Entrance       | Russia  | 2007 | 500      |
| Al Towaya Emirates Government Schools               | UAE        | 2008 | 970      | Tyumen Theatre Hall Rehearsal Hall      | Russia  | 2007 | 312      |
| Alain High Technology College Campuses              | UAE        | 2008 | 1.350    | Khanty Mansiysk Ice Hockey Arena 2      | Russia  | 2007 | 6.400    |
| Bicycle Plant Roof                                  | Türkiye    | 2008 | 1.000    | Akçansa Cement Plant - Dome - Çanakkale | Türkiye | 2007 | 19.000   |
| Community Facility - Wedding Hall and Congress Hall | Türkiye    | 2008 | 2.650    | Avon plant                              | Türkiye | 2007 | 12.000   |
| Faculty of Management Boys Campus                   | Kuwait     | 2008 | 2.250    | Gaziantep Exhibition Center             | Türkiye | 2007 | 16.000   |
| Faculty of Management Girls Campus                  | Kuwait     | 2008 | 5.400    | Hawally City Supermarket                | Kuwait  | 2007 | 900      |
| Feridun - Fuat Warehouse Roof                       | Türkiye    | 2008 | 5.370    | Hema Plant                              | Türkiye | 2007 | 15.630   |



# ALTINYALDIZ®

Uluslararası Uzay Sistem Konstrüksiyonları Sanayi ve Ticaret Anonim Şirketi  
International Space Frame Construction Industry and Commerce Joint Stock Co.

## References

| Project Name                                      | Country | Year | Area -M <sup>2</sup> | Project Name                               | Country    | Year | Area -M <sup>2</sup> |
|---|---------|------|----------------------|--|------------|------|----------------------|
| Hutten Apartments Project                         | Kuwait  | 2007 | 1.800                | Management Hall                            | Türkiye    | 2006 | 300                  |
| Kiler Warehouse                                   | Türkiye | 2007 | 25.000               | Market Place                               | Türkiye    | 2006 | 5.300                |
| Kipa Store , Denizli                              | Türkiye | 2007 | 1.800                | Marshall Warehouse Building                | Türkiye    | 2006 | 4.500                |
| Kipa Store, Edirne                                | Türkiye | 2007 | 7.120                | Mushrif Palace Parliament and Dining Halls | UAE        | 2006 | 3.100                |
| Kipa Store, Keşan                                 | Türkiye | 2007 | 11.400               | North Duhail Primary School                | Qatar      | 2006 | 1.800                |
| Kipa Store, Torbalı                               | Türkiye | 2007 | 6.320                | North Duhail Secondary School              | Qatar      | 2006 | 1.800                |
| Madinat Khalifa Secondary School                  | Qatar   | 2007 | 1.800                | Plant Roof                                 | Türkiye    | 2006 | 17.000               |
| Rawd Al Shaza Kindergarten                        | UAE     | 2007 | 1.600                | Plant Roof                                 | Türkiye    | 2006 | 4.300                |
| Şişecam Facility- Krasnodar                       | Russia  | 2007 | 19.000               | Plant Roof                                 | Türkiye    | 2006 | 3.400                |
| Warehouse Building                                | Romania | 2007 | 5.000                | Plant Roof                                 | Türkiye    | 2006 | 3.000                |
| Würth Warehouse Building İstanbul                 | Türkiye | 2006 | 4.100                | Plant Roof                                 | Türkiye    | 2006 | 3.000                |
| Tbilisi International Airport                     | Georgia | 2006 | 12.149               | Plant Roof                                 | Türkiye    | 2006 | 2.000                |
| University Sports Hall                            | Russia  | 2006 | 2.611                | Prototype School - Batı Muaither           | Qatar      | 2006 | 1.800                |
| Kipa Supermarket Blocks Çanakkale                 | Türkiye | 2006 | 11.000               | Reysaş Warehouse Building                  | Türkiye    | 2006 | 6.000                |
| İTÜ Swimming Pool                                 | Türkiye | 2006 | 3.335                | Shopping Mall                              | Türkiye    | 2006 | 5.100                |
| Akkim Warehouse Building                          | Türkiye | 2006 | 6.900                | Shopping Mall - Astana - Kazakhstan        | Kazakhstan | 2006 | 4.000                |
| Al Bateen Naval Museum                            | UAE     | 2006 | 920                  | Sports Hall                                | Türkiye    | 2006 | 3.000                |
| Al Tamayoz Boys School                            | Kuwait  | 2006 | 1.500                | Sports Hall                                | Türkiye    | 2006 | 1.500                |
| Ankara Batı Central Metro Stations-1,2,3,4 Blocks | Türkiye | 2006 | 4.779                | Umm Salal Mohammed Secondary School        | Qatar      | 2006 | 1.800                |
| Ankara Eryaman 1-2 Metro Stations-1,2,3,4 Blocks  | Türkiye | 2006 | 4.772                | Khanty Expo Center Project                 | Russia     | 2005 | 4.195                |
| Antakya Terminal Building Roof                    | Türkiye | 2006 | 1.750                | Antalya Airport International Terminal 2   | Türkiye    | 2005 | 15.500               |
| Asamallah Island Project                          | UAE     | 2006 | 4.050                | Congress Hall                              | Türkiye    | 2005 | 1.300                |
| Azizia Primary School                             | Qatar   | 2006 | 1.800                | Gıdasa Plant                               | Türkiye    | 2005 | 10.550               |
| Condor Main Gate Canopy                           | Kuwait  | 2006 | 3.600                | Plant Extension                            | Türkiye    | 2005 | 1.500                |
| Doğu Sulaibikhat Apartments                       | Kuwait  | 2006 | 3.150                | Tobacco Plant                              | Türkiye    | 2005 | 25.000               |
| Eseboğa Airport Arrival & Departure Hall          | Türkiye | 2006 | 17.000               | Umut Mahallesi Market Place                | Türkiye    | 2005 | 3.700                |
| Handicapped Athletics School                      | UAE     | 2006 | 3.100                | Ülker Warehouse Building                   | Türkiye    | 2005 | 6.600                |
| Kepez Port Storage and Waste Storage Building     | Türkiye | 2006 | 3.800                | Khanty Mansiysk Ice Hockey Arena 1         | Türkiye    | 2004 | 8.962                |
| Kipa Store , Balçova                              | Türkiye | 2006 | 3.370                | South Sabahiya Park Pyramid                | Kuwait     | 2004 | 3.685                |
| Kocaeli University Sports Hall                    | Türkiye | 2006 | 8.000                | Cairo International Airport                | Egypt      | 2004 | 5.063                |



# ALTINYALDIZ®

Uluslararası Uzak Sistem Konstrüksiyonları Sanayi ve Ticaret Anonim Şirketi  
International Space Frame Construction Industry and Commerce Joint Stock Co.

## References

| Project Name                              | Country | Year | Area -M² | Project Name                                     | Country | Year | Area -M² |
|---|---------|------|----------|--|---------|------|----------|
| C.B.F.S Building                          | Oman    | 2004 | 550      | B Block Building                                 | Türkiye | 2002 | 2.160    |
| Car Wash Area Project                     | UAE     | 2004 | 1.600    | Beğendik Warehouse - Kumalı                      | Türkiye | 2002 | 3.225    |
| Cmbc Sports Hall                          | Kuwait  | 2004 | 814      | Bismil - Diyarbakır Tobacco Warehouse            | Türkiye | 2002 | 5.000    |
| Plant Roof                                | Türkiye | 2004 | 12.750   | Bursa Mitsubishi 4 S Building                    | Türkiye | 2002 | 982      |
| Shades for Hotel - Bodrum                 | Türkiye | 2004 | 2.250    | Bus Terminal                                     | Türkiye | 2002 | 6.000    |
| Sulaibiya Youth Sports Center             | Kuwait  | 2004 | 1.250    | Business Center - Çakmaklı                       | Türkiye | 2002 | 8.000    |
| Warehouse Building                        | Türkiye | 2004 | 5.900    | Büyükçekmece - Material Canopy                   | Türkiye | 2002 | 250      |
| Armory Plant                              | Türkiye | 2003 | 4.850    | C Block Building                                 | Türkiye | 2002 | 2.756    |
| Dining Hall                               | Türkiye | 2003 | 1.050    | Cebeci Bread Plant                               | Türkiye | 2002 | 7.932    |
| Girls Secondary School                    | UAE     | 2003 | 4.000    | Citrus Packing Plant - Tarsus                    | Türkiye | 2002 | 12.000   |
| Kayseri Exhibition Halls                  | Türkiye | 2003 | 7.050    | Conference Hall                                  | Türkiye | 2002 | 1.267    |
| Military Training Building                | Türkiye | 2003 | 8.000    | Custom Gate Service Buildings                    | Türkiye | 2002 | 7.450    |
| Plant Extension, Malatya                  | Türkiye | 2003 | 5.350    | Çanakkale University Conference Hall             | Türkiye | 2002 | 500      |
| Plant Roof - Gebze                        | Türkiye | 2003 | 4.400    | Çerkezköy Aged Care Facility - Multipurpose Hall | Türkiye | 2002 | 250      |
| Quadsiya Swimming Pool                    | Kuwait  | 2003 | 4.400    | Electronical Factory                             | Türkiye | 2002 | 3.710    |
| Retail Store                              | Kuwait  | 2003 | 1.100    | Emlak Kredi Bank Ataşehir Multipurpose Hall      | Türkiye | 2002 | 250      |
| Rubber Plant                              | Türkiye | 2003 | 9.000    | Enterence Gate Canopy                            | Türkiye | 2002 | 250      |
| Warehouse Building                        | UAE     | 2003 | 2.000    | Enterence Gate Canopy                            | Türkiye | 2002 | 250      |
| Wedding Hall Roof                         | Israel  | 2003 | 1.100    | Erivan Golden Palas Hotel                        | Armenia | 2002 | 1.000    |
| Plant Roof                                | Türkiye | 2002 | 4.015    | Essence and Aroma Plant                          | Türkiye | 2002 | 2.000    |
| Akçansa Coal Storages                     | Türkiye | 2002 | 6.754    | Europe-Asia Cross-continental Exhibition Center  | Türkiye | 2002 | 30.000   |
| Cold Storage Depot                        | Türkiye | 2002 | 2.641    | Exhibition Halls 1, 2, 6, 7, Showroom            | Türkiye | 2002 | 18.714   |
| Warehouse                                 | Türkiye | 2002 | 10.351   | Girls Business High School Conference Hall       | Türkiye | 2002 | 500      |
| Terzibaba Mosque 50 m. span Dome          | Türkiye | 2002 | 1.729    | Hose Production Factory                          | Türkiye | 2002 | 1.500    |
| Al Ardiyah Youth Center                   | Kuwait  | 2002 | 5.050    | Karabük Bus Terminal                             | Türkiye | 2002 | 1.735    |
| Al Rayyan Al Qadeem Prep. School          | Qatar   | 2002 | 1.800    | Kıralı Cable Plant                               | Türkiye | 2002 | 5.184    |
| Al Tabary School                          | UAE     | 2002 | 1.500    | Madinat Khalifa, Girls Primary School            | Qatar   | 2002 | 1.800    |
| Al-Andulus School                         | Qatar   | 2002 | 1.800    | Marketplace                                      | Türkiye | 2002 | 7.620    |
| Arabi Sports Club                         | Kuwait  | 2002 | 4.200    | Material Canopies                                | Türkiye | 2002 | 800      |
| Ataşehir Social Facilities Cafeteria Roof | Türkiye | 2002 | 250      | Material Canopies - Çayırova                     | Türkiye | 2002 | 250      |





# ALTINYALDIZ®

Uluslararası Uzak Sistem Konstrüksiyonları Sanayi ve Ticaret Anonim Şirketi  
International Space Frame Construction Industry and Commerce Joint Stock Co.

## References

| Project Name                        | Country | Year | Area -M² | Project Name                                      | Country | Year | Area -M² |
|-------------------------------------|---------|------|----------|---|---------|------|----------|
| Material Canopies - Sefaköy         | Türkiye | 2002 | 250      | Şehit Kamil Market Place                          | Türkiye | 2002 | 4.154    |
| Meat, Fish, Grocery Market Place    | UAE     | 2002 | 5.365    | Tekstile Factory                                  | Türkiye | 2002 | 4.000    |
| Muraikh Primary School              | Qatar   | 2002 | 5.300    | Textile Plant Malatya                             | Türkiye | 2002 | 8.877    |
| New Charter Terminal                | Türkiye | 2002 | 18.500   | Tubular Passage                                   | Türkiye | 2002 | 800      |
| New Service Building                | Türkiye | 2002 | 3.750    | Tutim Enterence Canopies                          | Türkiye | 2002 | 200      |
| New Terminal Canopy                 | Türkiye | 2002 | 250      | Unika Kablo Çerkezköy Facility                    | Türkiye | 2002 | 4.750    |
| Painting and Welding Buildings      | Türkiye | 2002 | 4.950    | University Sports Hall                            | Türkiye | 2002 | 3.500    |
| Plant Canopy                        | Türkiye | 2002 | 2.350    | Warehouse Building                                | Türkiye | 2002 | 11.450   |
| Plant Dining Hall                   | Türkiye | 2002 | 600      | Warehouse Building                                | Türkiye | 2002 | 6.840    |
| Plant Extension                     | Türkiye | 2002 | 3.600    | Warehouse Building                                | Türkiye | 2002 | 1.000    |
| Plant Extension                     | Türkiye | 2002 | 1.200    | Warehouse Building - Çayırova                     | Türkiye | 2002 | 2.160    |
| Plant Phase 2                       | Türkiye | 2002 | 6.728    | West Bahiya Boys Primary School                   | UAE     | 2002 | 1.400    |
| Plant Roof                          | Türkiye | 2002 | 15.600   | Yeşilköy Aircraft Shed                            | Türkiye | 2002 | 5.500    |
| Plant Roof                          | Türkiye | 2002 | 6.000    | Malta International Airport Hangar                | Malta   | 2001 | 1.250    |
| Plant Roof                          | Türkiye | 2002 | 5.300    | Türk Metal Sendikası Ankara Sports Hall           | Türkiye | 2001 | 4.678    |
| Plant Roof                          | Türkiye | 2002 | 3.300    | Adana Galeria Apartments Blocks                   | Türkiye | 2001 | 3.200    |
| Plant Roof                          | Türkiye | 2002 | 3.080    | Akdeniz Atatürk Kültür Park Conference Hall       | Türkiye | 2001 | 1.100    |
| Plant Roof - Gebze                  | Türkiye | 2002 | 2.800    | Antalya - Adana - Trabzon Loading Canopies        | Türkiye | 2001 | 250      |
| Plaza Building                      | Türkiye | 2002 | 250      | Antique Automobile Museum                         | Jordan  | 2001 | 2.270    |
| Psychiatry Hospital                 | Kuwait  | 2002 | 1.200    | Ataköy Kültür College - Tubular Passages          | Türkiye | 2001 | 250      |
| Sabah Media Plaza                   | Türkiye | 2002 | 2.000    | Ataköy Kültür College Sports Hall                 | Türkiye | 2001 | 700      |
| Shawamekh Boys Primary School Yard  | UAE     | 2002 | 1.400    | Bafra - Samsun Tobacco Warehouses                 | Türkiye | 2001 | 5.000    |
| Shawamekh Girls Primary School Yard | UAE     | 2002 | 1.400    | Baniyas Bus Terminal                              | UAE     | 2001 | 700      |
| Sports Hall                         | Türkiye | 2002 | 3.700    | Beko Plant Crosswalks                             | Türkiye | 2001 | 250      |
| Sports Hall                         | Türkiye | 2002 | 2.096    | Belek Hotel                                       | Türkiye | 2001 | 250      |
| Sports Hall                         | Türkiye | 2002 | 1.700    | Bodrum Club Orta Holiday Village Enterence Canopy | Türkiye | 2001 | 250      |
| Sports Hall                         | Türkiye | 2002 | 1.100    | Boğaziçi University Sports Hall                   | Türkiye | 2001 | 2.000    |
| Sports Hall                         | Türkiye | 2002 | 1.000    | Boiler Room Roof                                  | Türkiye | 2001 | 200      |
| Şüzer Hotel Building                | Türkiye | 2002 | 300      | Burgaz Island Fener Disco                         | Türkiye | 2001 | 600      |
| Swimming Pool                       | Türkiye | 2002 | 250      | Citrus Packing Plant                              | Türkiye | 2001 | 11.500   |



# ALTINYALDIZ®

Uluslararası Uzay Sistem Konstrüksiyonları Sanayi ve Ticaret Anonim Şirketi  
International Space Frame Construction Industry and Commerce Joint Stock Co.

## References

| Project Name   | Country | Year | Area -M <sup>2</sup> | Project Name  | Country | Year | Area -M <sup>2</sup> |
|--|---------|------|----------------------|---|---------|------|----------------------|
| Commercial International Bank                            | Egypt   | 2001 | 207                  | Piramit Entertainment Center & Bowling Hall- Fenerbahçe | Türkiye | 2001 | 250                  |
| Conference Hall  | Türkiye | 2001 | 730                  | Plant and Dining Hall Roof                              | Türkiye | 2001 | 2.500                |
| D.S.I. Field Houses                                      | Türkiye | 2001 | 2.100                | Plant Canopy  | Türkiye | 2001 | 250                  |
| Dez School   | UAE     | 2001 | 652                  | Plant Roof  | Türkiye | 2001 | 7.400                |
| Emlak Bank - High School Ataköy                          | Türkiye | 2001 | 1.500                | Plant Roof  | Türkiye | 2001 | 2.100                |
| Enterence Gate Canopy                                    | Türkiye | 2001 | 250                  | School Prototype W 14                                   | UAE     | 2001 | 1.400                |
| Eveready Kent Battery Plant                              | Türkiye | 2001 | 4.000                | Sharm El Sheikh Hotel                                   | UAE     | 2001 | 740                  |
| Ford Showroom  | Türkiye | 2001 | 325                  | Show TV Antenna Tower                                   | Türkiye | 2001 | 250                  |
| Gas Station  | Türkiye | 2001 | 800                  | Silivri Plant Extension                                 | Türkiye | 2001 | 1.100                |
| Headquater Terrace Shade                                 | Türkiye | 2001 | 350                  | Space Frame Bridge - Kadir Has Residence                | Türkiye | 2001 | 250                  |
| Industrial Estate Cooperative                            | Türkiye | 2001 | 940                  | Sports Hall - Cevizli                                   | Türkiye | 2001 | 1.420                |
| İstek Foundation Disco ve Conference Hall                | Türkiye | 2001 | 950                  | Şile Ceremony Area                                      | Türkiye | 2001 | 900                  |
| İzmir Fatih High School Sports Hall                      | Türkiye | 2001 | 250                  | Tofaş Showroom  | Türkiye | 2001 | 400                  |
| Kadıköy Tax Office Dining Hall                           | Türkiye | 2001 | 450                  | Trade Center Warehouse Building                         | Türkiye | 2001 | 960                  |
| Kent Gıda Çiklet Plant - Çayırova                        | Türkiye | 2001 | 2.300                | Trade Center Warehouse Building Canopy                  | Türkiye | 2001 | 250                  |
| Kuşadası Hotel   | Türkiye | 2001 | 350                  | Warehouse - Gebze Dilovası                              | Türkiye | 2001 | 1.020                |
| Lifting Beams  | Türkiye | 2001 | 250                  | Warehouse building - Dilovası                           | Türkiye | 2001 | 1.050                |
| LPG Filling Facility Canopy                              | Türkiye | 2001 | 350                  | Warehouse building - Dilovası                           | Türkiye | 2001 | 500                  |
| Mechanical Bridge  | Türkiye | 2001 | 250                  | Wedding Hall Roof                                       | Türkiye | 2001 | 700                  |
| Mechanical Tower   | Türkiye | 2001 | 250                  | Abdul Jalil Playground Area                             | UAE     | 2000 | 500                  |
| Musaffah Bus Terminal                                    | UAE     | 2001 | 1.130                | Abu Dhabi International Airport Security Control        | UAE     | 2000 | 850                  |
| Netaş Roof Skylight Construction                         | Türkiye | 2001 | 250                  | Aiwa Gulf Jebel Ali Warehouse                           | UAE     | 2000 | 550                  |
| Netaş Shade  | Türkiye | 2001 | 250                  | Al Aruba Shopping Mall                                  | KSA     | 2000 | 3.689                |
| Nevşehir Vocational School of Tourism & Hotel Management | Türkiye | 2001 | 355                  | Al Ghazally School Building Roof                        | UAE     | 2000 | 850                  |
| New Bus Terminal Roof                                    | Türkiye | 2001 | 6.000                | Al Nahyan School Project                                | UAE     | 2000 | 800                  |
| Niğde Ağaçlı Facilities                                  | Türkiye | 2001 | 250                  | Al Oyoon Sports Club                                    | Kuwait  | 2000 | 4.450                |
| Packing Plant Main Enterence Canopy                      | Türkiye | 2001 | 450                  | Al Qurain Neighborhood Centre Project                   | Kuwait  | 2000 | 2.510                |
| Pamukkale North - South Gates                            | Türkiye | 2001 | 4.000                | Al Raha Beach Theatre                                   | UAE     | 2000 | 1.600                |
| Paper Warehouse  | Türkiye | 2001 | 1.000                | Al Saheel Swimming Pool                                 | Kuwait  | 2000 | 4.500                |
| Parking Garage   | Türkiye | 2001 | 110                  | Al Tower Commerce Complex                               | UAE     | 2000 | 2.000                |



# ALTINYALDIZ®

Uluslararası Uzay Sistem Konstrüksiyonları Sanayi ve Ticaret Anonim Şirketi  
International Space Frame Construction Industry and Commerce Joint Stock Co.

## References

| Project Name                                     | Country      | Year | Area -M² | Project Name                             | Country    | Year | Area -M² |
|--|--------------|------|----------|--|------------|------|----------|
| Al Yarmouk Stadium Shade                         | Kuwait       | 2000 | 540      | Shamiya Supermarket                      | Kuwait     | 2000 | 1.024    |
| Ashgabat Airport Terminal                        | Turkmenistan | 2000 | 1.985    | Sheikh Bin Ham Parliament Roof           | UAE        | 2000 | 500      |
| Ashgabat Akaltin Hotel Casino                    | Turkmenistan | 2000 | 700      | Shopping Mall                            | KSA        | 2000 | 447      |
| Atrium and Enterence Canopy                      | UAE          | 2000 | 250      | Spartak Moskow Football Club Sports Hall | Russia     | 2000 | 1.150    |
| Beşiktaş Sports Hall                             | Türkiye      | 2000 | 2.160    | Tec Swimming Pool                        | Kuwait     | 2000 | 2.050    |
| Binham Parliament Swimming Pool                  | UAE          | 2000 | 400      | Umm Al Qura University                   | KSA        | 2000 | 934      |
| Cooperative Society                              | UAE          | 2000 | 1.500    | Zahran School Sports Hall                | Egypt      | 2000 | 1.521    |
| Das Island Mosque                                | UAE          | 2000 | 700      | Arabian Horse Canopies                   | Kuwait     | 1999 | 800      |
| Delma Combined School Sports Hall                | UAE          | 2000 | 1.370    | Arabian Horse Center                     | Kuwait     | 1999 | 600      |
| Health Center and Police Station                 | Kuwait       | 2000 | 2.500    | Sports Hall                              | Türkiye    | 1999 | 4.200    |
| High School Prototype W 19/1 & 24/1 Sports Halls | UAE          | 2000 | 3.500    | Baku Bus Terminal                        | Azerbaijan | 1998 | 2.750    |
| Jahra Swimming Pool                              | Kuwait       | 2000 | 1.500    | Citrus Warehouse                         | Türkiye    | 1996 | 12.000   |
| Kazema Multipurpose Center                       | Kuwait       | 2000 | 2.200    | Acibadem İbrahimağa- Sports Hall         | Türkiye    | 1991 | 1.219    |
| Kuwait Industrial Area                           | Kuwait       | 2000 | 5.050    | Enterence Gate Canopy                    | Türkiye    | 1991 | 15.850   |
| Kuwait University Multipurpose Buildings         | Kuwait       | 2000 | 750      | Kent Battery Plant                       | Türkiye    | 1991 | 3.564    |
| Meat, Fish, Grocery Market Place                 | UAE          | 2000 | 500      | Şile Ceremony Area                       | Türkiye    | 1991 | 900      |
| Military Lodgement                               | Russia       | 2000 | 550      | Moscow Veterans Hospital                 | Russia     | 1990 | 770      |
| Ministry of Defence Engineering Building         | Kuwait       | 2000 | 784      | Plant Roof                               | Türkiye    | 1990 | 1.296    |
| Mpw / Mew Ministries Head Offices                | Kuwait       | 2000 | 2.800    | Warehouse                                | Türkiye    | 1990 | 900      |
| Passport Building                                | UAE          | 2000 | 600      |  |            |      |          |
| Post Office Building                             | Lebanon      | 2000 | 630      |  |            |      |          |
| Prep. School Prototype W 16                      | UAE          | 2000 | 1.400    |  |            |      |          |
| Primary Girls School                             | UAE          | 2000 | 1.008    |  |            |      |          |
| Primary Girls School Yard Shade Sector W-14      | UAE          | 2000 | 1.008    |  |            |      |          |
| Primary School Sector W-14                       | UAE          | 2000 | 1.400    |  |            |      |          |
| Prototype School Sports Center                   | UAE          | 2000 | 1.750    |  |            |      |          |
| Qatar University                                 | Qatar        | 2000 | 1.500    |  |            |      |          |
| Rehabilitation Center for Handicapped            | UAE          | 2000 | 1.300    |  |            |      |          |
| Rouqiya Primary School                           | UAE          | 2000 | 1.008    |  |            |      |          |
| Shahama Primary School                           | UAE          | 2000 | 1.008    |  |            |      |          |





# ALTINYALDIZ®

Uluslararası Uzay Sistem Konstrüksiyonları Sanayi ve Ticaret Anonim Şirketi  
International Space Frame Construction Industry and Commerce Joint Stock Co.

## Thank You...