



The World Cup is very hot at present
Make Qatar famous with an investment of 200 billion
Qatar built a new city for FIFA World Cup
It has also built the entire transportation system
The Doha Metro Station participated by ALTOP is built for
the World Cup
The subway is directly connected to each stadium
Free services for fans from all over the world

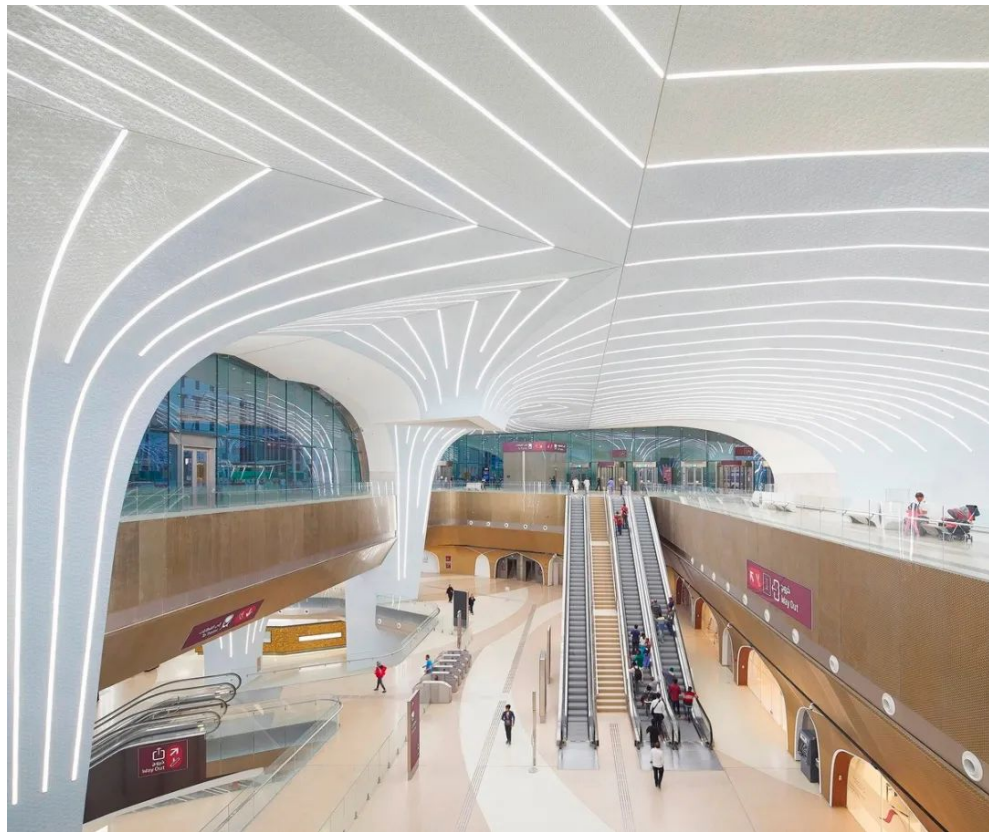


The Doha Metro system has planned four lines, including the red line, green line, gold line and blue line. The red line runs from Al Wakra in the south of Doha to Lusail in the north, via Hamad International Airport, with a total length of 40 kilometers, 18 stations, the most advanced unmanned driving system, and the fastest speed of 100 km/h. The car is divided into three compartments - standard compartment, family compartment and golden club compartment. Each

train can hold 130 people, with a total capacity of nearly 420 people.

Malawi, the director of public relations and communications of Qatar Railways, said that this is one of the major projects in Qatar and a new way of transportation throughout the country. It will welcome all nationals, tourists and foreigners living in Qatar.

The concept design of Doha Metro Station is done by the Dutch architectural practice UN Studio. The project uses the existing vault space elements in the buildings in this area, and reinterprets them through modern methods. The exterior design of the building echoes the strong characteristics of Qatari architecture in the old period, while the interior space creates a dynamic and mobile radiation effect. Through the unique decoration and material collage, the large indoor space is divided, which makes it easier for pedestrians to find directions in it.

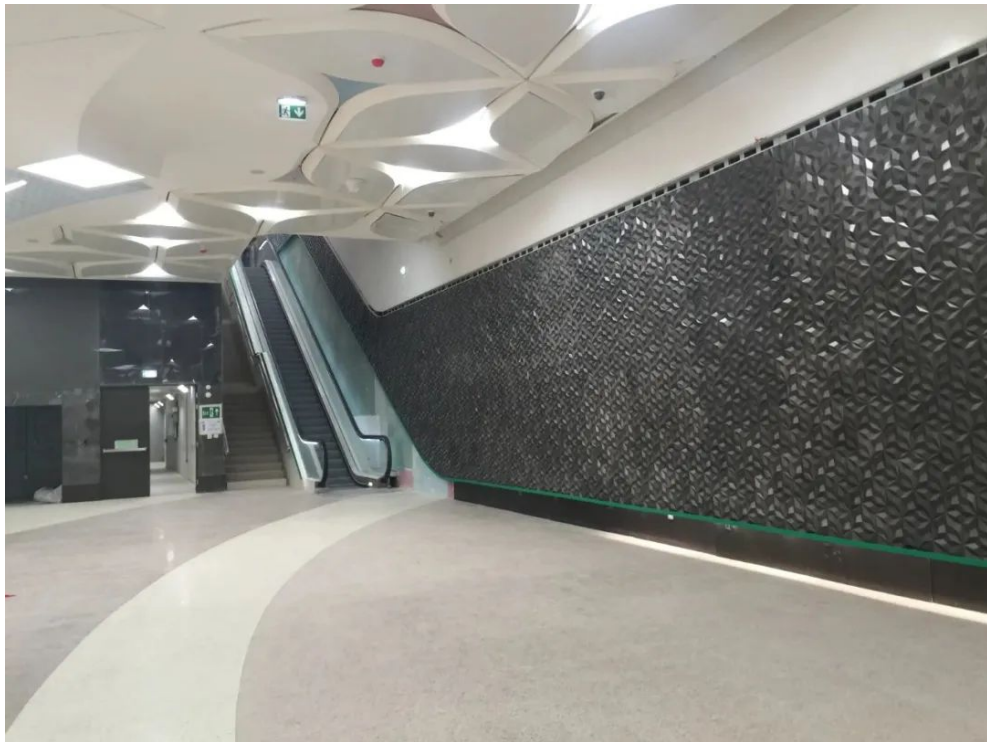


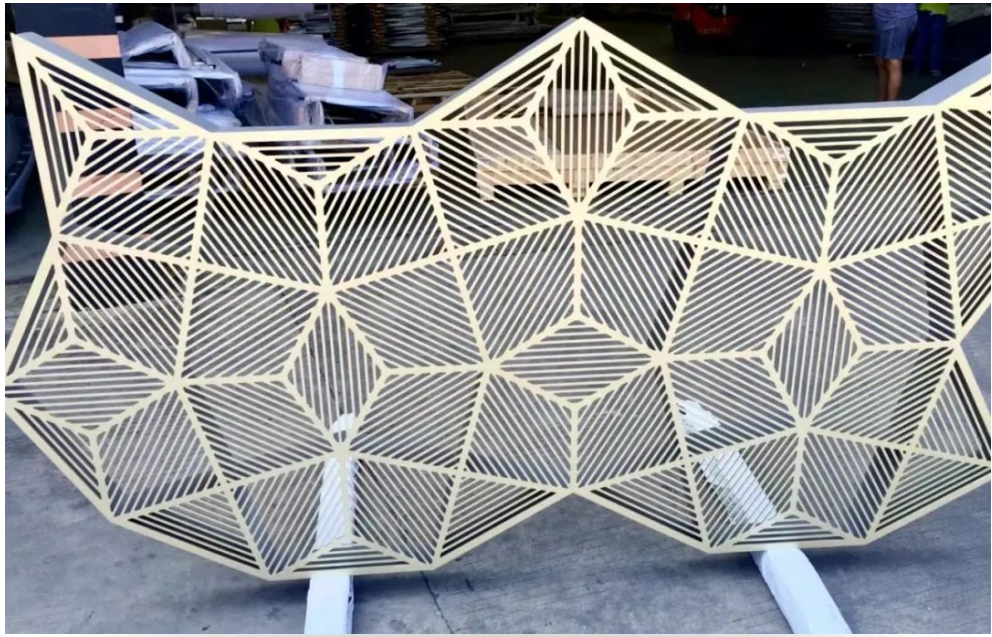
ALTOP participated in a series of manufacturing processes of indoor ceilings, background walls, elevator handrails, wallboards, etc. in Doha Metro Station. Due to the tight

project schedule and high requirements for quality, the project team prepared for a rainy day. During this period, the project team carried out several comparisons and selections of shapes, materials, colors, etc., laying a solid foundation for the quality control of formal construction.

In order to comprehensively control the quality, the Project Department stipulates that each component must be pre assembled in the factory before leaving the factory, and the on-site quality control personnel can leave the factory only after passing the acceptance.

After the members enter the construction site, each process from material mobilization, on-site pre assembly, welding, to block assembly and molding shall be strictly in accordance with the acceptance standards of the three parties.







ALTOP successfully completed the construction of Doha Metro Station with high standards and quality within the construction period, optimized urban construction based on pedestrian experience, and established a new commuter mode for the residents' communities in Doha.



Qatar, a country with rich resources, began to take the route of "Dubai" many years ago, determined to build a city of science and technology and develop emerging industries. Zhongying Jianke has also successively participated in many projects in Qatar, such as the Doha Metro Station, the heart of Doha project, which will be introduced later.



After many times of cooperation, ALTOP's working attitude has been highly recognized, and has established a long-term cooperation relationship with the Qatari government. In the future, ALTOP will also bring more Qatari architectural works to you. Let's look forward to it!



www.xmyeditor.com

可自定义图片宽度、页脚、分割线
速排小蚂蚁编辑器提供技术支持