



# Sparko Product Details

---

ADB Sealant Co., Ltd.

# ADB SEALANT CO., LTD.



**APPLIED DB** Public Company Limited

A leading manufacturer and distributor of **PVC COMPOUNDS**,  
**Adhesives** and **Sealants** according to **INTERNATIONAL STANDARDS**.



Applied DB Public Company Limited <https://www.adb.co.th>



ADB SEALANT Co.,Ltd (ADBS) เป็นผู้ผลิตสินค้าในกลุ่มกาว และยาแนว  
โดยมีการจัดจำหน่ายทั้งในและนอกประเทศ ภายใต้แบรนด์ของทางบริษัทฯ ตลอดจนแบรนด์ของลูกค้า

# Factories



## ❖ Factory 1: Head Office and Adhesive Production



ENSG48729



ENSG48729



ENSG48729



0005



ENSG48729



ENSG48729



ENSG48729

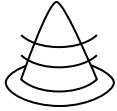
## Factory 2 & 3: Plastic Compound Production



## ❖ Factory 4: Silicone Sealant & DIY Production



# Product List by Packaging Types



---

## In Cartridges

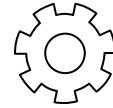
Silicone E104, N192, N199 & **N197**  
Acrylic A007  
Super Nail Adhesive  
**Hybrid/MS Sealants**



---

## In Alu Tubes, Pail, Can

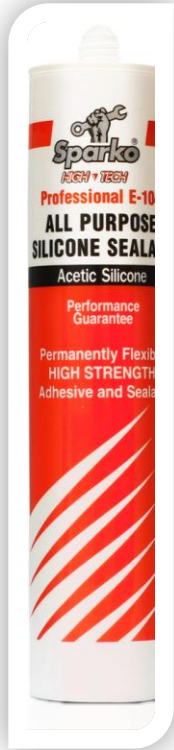
Epoxy  
Super Glue  
Pipe Adhesive  
Contact Adhesive  
Acrylic Wall Putty  
RTV Gasket Maker  
Liquid Gasket



---

## Others

PU Foam  
X5



# Sparko E104 - acetic

- ❖ Dry Quickly
- ❖ Inexpensive, has odor, shrinks when dry
- ❖ Not suitable for metal and rubber surface
- ❖ Best used for bonding between glass to glass



# Sparko N192 & N199 non acetic

- ❖ Suitable for a wide variety of surfaces
- ❖ Low odor
- ❖ Quick dry, but minimal shrinkage upon drying
- ❖ Contains the antifungal agent (N199)



# New Product

## N197 Neutral Silicone Sealant Industrial Grade



Low & Medium Modulus have been chosen for long time in construction industry

High Modulus will replace Low and Medium as the building and construction industry require more bonding and strength of sealants

# อะคริลิก ยาแนว (Acrylic Sealant)



- ❖ hardness and low flexibility making it ideal for filling gaps and sanding for a smooth finish. It can be painted over and provides a neat finish. It is suitable for general applications such as filling cracks in walls, sealing joints between door and window frames and walls, and sealing sanitary ware joints.



# Acrylic Wall Putty



- \*Ideal for filling cracks, joints, and holes.
- \*Adheres well to concrete, brick, and wood.
- \*Sandable and paintable.
- \*Low VOC (volatile organic compounds).
- \*Ready-to-use and quick-drying. *Suitable for both indoor and outdoor use.*



วงกบนํ้าต่าง



รอยต่อระหว่างบันได

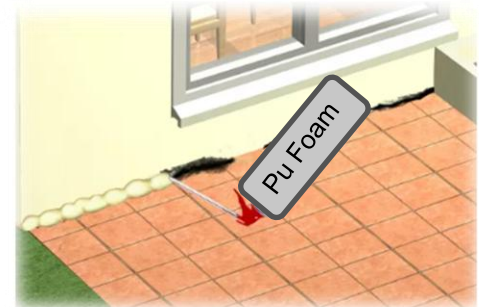
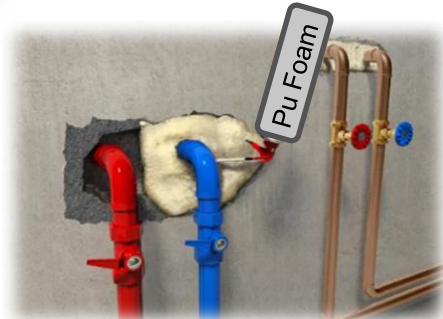


รอยต่อขอบประตู

# Pu foam

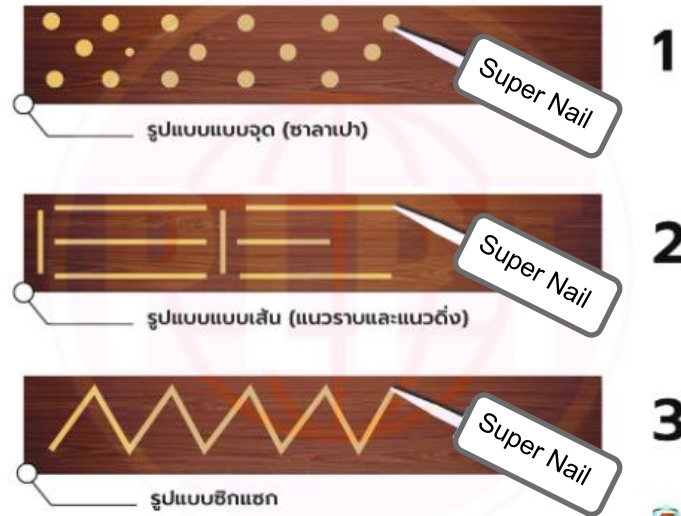


- Used for installation, it acts as a thermal and acoustic insulator after application. It is used for repairs, sealing leaks, and filling wall cracks. It can be easily trimmed with a cutter to fit the surface. It is lightweight, durable, and can be used on aluminum, steel, concrete, and wood, both indoors and outdoors.



# Super Nail

Super Nail is a versatile adhesive used to install various materials as an alternative to nails. It eliminates the need for drilling or hammering, saving time. Nail glue offers strong adhesion, high bonding strength, and quick drying time. Moreover, it can adhere to a wide range of materials and surfaces. It is easy to use and convenient, with a short installation time, making it suitable even for novice DIY enthusiasts.



# RTV

Silicone gasket sealant is a high-viscosity adhesive used to bond or seal metal flanges. It effectively prevents leaks of liquids or gases from system components at flange joints. The liquid gasket can fully penetrate gaps between joined materials, ensuring a leak-proof seal. It offers excellent resistance to cracking, shrinkage, vibration, high temperatures, chemicals, oils, greases, lubricants, water, and antifreeze/coolant. Applications include engine block sealing, water pump valves, water heaters/coolers, general caulking, glass sealing, metal, vinyl, plastic, and automotive trim



# Epoxy



Epoxy adhesives require a two-component mixture of epoxy resin and hardener in the correct ratio for optimal curing and performance. Epoxy adhesives offer excellent bonding strength and superior resistance to temperature and chemicals, making them ideal for industrial applications. They can be used on a variety of materials such as wood, metal, tile, glass, and plastic.

# Super Glue

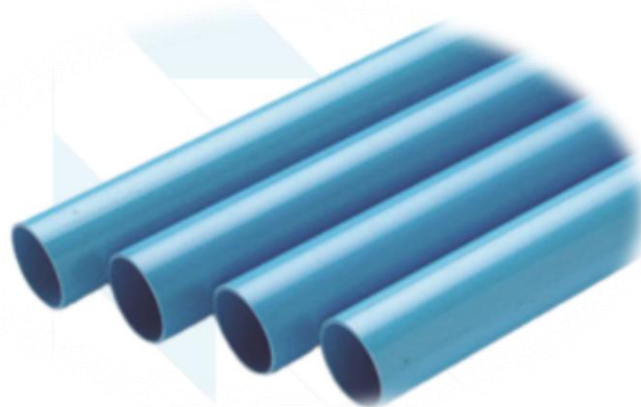


A specialized, fast-drying, multi-purpose adhesive, ideal for industrial applications. It is widely used in the assembly of components in various industries, including automotive, sports equipment, and electronics

# Pipe Adhesives



- A clear, fast-drying adhesive designed to melt PVC pipes, ensuring a watertight seal. Perfect for various applications including plumbing and drainage.





# Contact Adhesive



Offers high bonding strength. Flexible when dry.  
Temperature resistant. Suitable for a wide range of materials including metal, tile, wood, paper, rubber, leather, felt, Formica, and laminate.



# X5 All-In-One Lube



## 5 Key Features:

Lubrication: For door hinges, sliding windows, conveyor belts, and motors.

Penetration: Reaches into tight spaces.

Rust prevention: Creates a thin oil film on surfaces after spraying.

Cleaning: Removes dirt, grease, or grease from machinery.

Moisture displacement: Displaces moisture from circuit boards, electric motors, switches, and plugs.

# Sparko HT333

Gasket replacement sealant. Can be used as a gasket or to replace old gaskets in various applications such as engine head, water valve, water heater, water cooler, and general sealing for glass, metal, vinyl, plastic, and car moldings. \*Non-cracking, non-shrinking, and highly flexible. \*Highly resistant to vibration. \*Resistant to degradation from heat, chemicals, oil, or grease. \*Can withstand temperatures up to 343°C. \*Water and oil resistant. *Gray silicone sealant. Easy to use and spread evenly without mess.*



Thank You

